

Your consent to an interview

Written consent will be sought from the child's carer before the interview. Children and young people aged 7 years and older are shown the study video www.facs.nsw.gov.au/resources/research/pathways-of-care/videos and study information form before they agree to an interview. Carergivers are given information on the questions children and young people are being asked, but their answers to the questions are confidential. You can withdraw consent and discontinue at any time.

How was the child or young person selected for this study?

Children and young people aged 0-17 years entering OOHC on final Children's Court orders for the first time between May 2010 and October 2011 are eligible to participate in the study. Children and young people were selected for this study from the DCJ administrative database.

How will I be informed about the findings?

Newsletters and research reports are published as the data becomes available. These are available on the study webpage at www.facs.nsw.gov.au/resources/research/pathways-of-care. Newsletters will be mailed to study participants. The findings are to be used to inform policy development and staff training.

In any publication, information is presented in such a way that you or the child in your care is not able to be identified.

Other sources of study information

To get a good understanding of how the service system is working we collect information about the child or young person's development and wellbeing from a number of sources including the child's case file, caseworker and teacher.

We also use existing information held by education, health and human services agencies, and link it to the information collected for this study.

Who is conducting the study?

The NSW Department of Communities and Justice (DCJ) is conducting the study with the assistance of a consortium of researchers from the University of Sydney, University of NSW, University of South Australia, Kurungkurl Katitjin - Edith Cowan University, University of Wollongong, Sax Institute, University of Canterbury - New Zealand, Chapin Hall Centre for Children University of Chicago. The interviews are being conducted by Ipsos/I-view www.ipsos.com.au who are social research data collection experts. These researchers have experience conducting similar studies.

Ethics approvals

The study has been approved by the UNSW Human Research Ethics Committee (no. HC 210985) and the Aboriginal Health and Medical Research Council of NSW Ethics Committee (no. 2016/22). For more information about ethics approvals please see the study webpage.

Where can I get support?

Phone **1300 794 653** for Connecting Carers NSW (CCNSW) who provide all foster, kinship and relative carers across NSW access to a 24 hour support line.

Phone **1800 888 698** (free call) for the Aboriginal Statewide Foster Care Support Service (ASFCSS) who provide telephone advice for kinship, relative and foster carergivers of Aboriginal children in OOHC.

Where do I find more study information?

Phone **1800 997 960** (free call) for DCJ who are managing the study or email Pathways@facs.nsw.gov.au

Phone **1800 105 088** (free call) for Ipsos/I-view who are conducting the interviews.

See study webpage for more information: www.facs.nsw.gov.au/resources/research/pathways-of-care.



Information for Caregivers

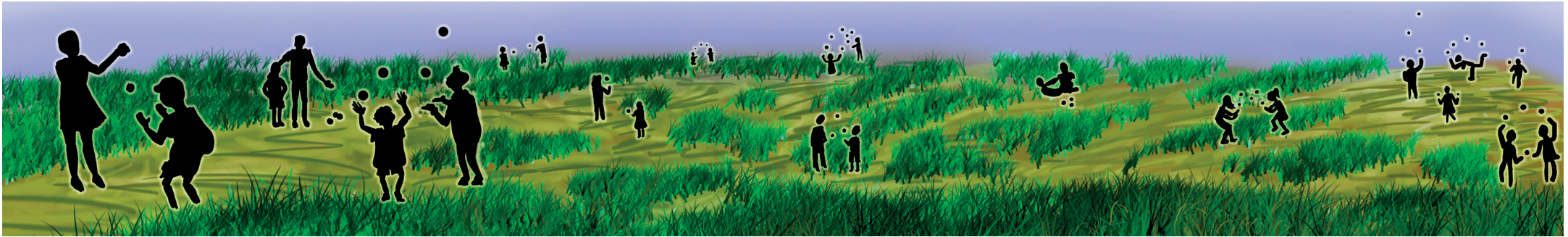
Pathways of Care Longitudinal Study

A study of children and young people in out-of home

The artwork was created by a young person who grew up in care.

"The banner and logo show many pathways through the care system with a carer or caseworker acting as a guide, ultimately leading to independence of every young person. Whether we live with family or strangers, study, work or just try our best, the paths we choose and are guided through in our youth are what we use to prepare ourselves for the happiest adulthood we can achieve." Billy Black





Pathways of Care Longitudinal Study

You are invited to participate in the 6th round of interviews for this important study of children and young people in out-of-home care (OOHC) in NSW. The last round of interviews was conducted about two years ago.

The Pathways of Care Longitudinal Study is helping us learn more about children and young people's experiences, development and wellbeing. The knowledge gained from this study is being used to provide better services to caregivers, children and young people in care.

Caregivers who are new to this study

Welcome to the study. We would like to invite you to be part of the 6th round of interviews. Your child may have participated in earlier rounds of interviews.

Before you agree to be part of this study, a researcher from the NSW Department of Communities and Justice (DCJ) will contact you to discuss it. If you agree, your contact details will be securely transferred to Ipsos/I-view who is conducting the interviews. Ipsos/I-view are social research data collection experts. For more information, visit www.ipsos.com.au.

An Ipsos/I-view interviewer will contact you to join the study and organise a time and place to conduct the interview.

Caregivers who have been interviewed for this study

Thank you for participating in the previous interviews. We would like to interview you again to see how the child or young person in your care is going.

An Ipsos/I-view interviewer will contact you to invite you to be part of the 6th round of interviews. This interview is very similar to the last one.

Do I have to participate?

Participation in this study is voluntary and you can withdraw at any time. If you agree to participate you do not have to answer all the questions. Your decision about whether or not to participate will not affect your relationship with DCJ.

What does participation in the study involve?

The interview focuses on the child or young person's health, behaviour, development, wellbeing and experiences. You will also be asked about your family's situation and the services and support your family receives.

During the interview, your answers are recorded on the interviewer's computer. There are some questions for you to complete on the computer yourself.

The interviewer also documents their observations of the interview and the setting.

The interview is expected to take about two hours and you will receive a \$50 gift voucher for every interview as a thank you for giving up your valuable time to take part.

What about my family's privacy?

Information is transferred from the interviewer's computer to a secure database that keeps names and other identifying information separate from your answers. Your contact details are only used to stay in touch with you.

All information is gathered from people in this study remains confidential except as required by law (eg. if the child's safety, welfare or wellbeing is of concern). Only authorised research staff have access to the data. It is not possible to identify anyone from the data.

How will the child or young person in my care be involved?

Children and young people aged 12-17 years need to be at home during the interview because the interviewer will invite them to do a language and reasoning activity that takes about 10 minutes.

Children and young people aged 12-17 years are also invited to an interview about their experiences that takes about 30 minutes.

To thank them for participating in the study, children and young people will receive a \$30 gift voucher.