

Inclusive, Engaging, Respectful Schools

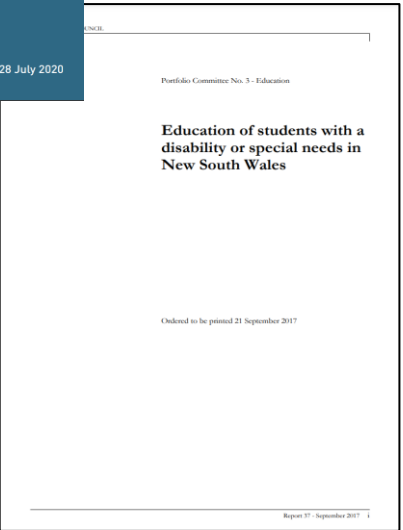
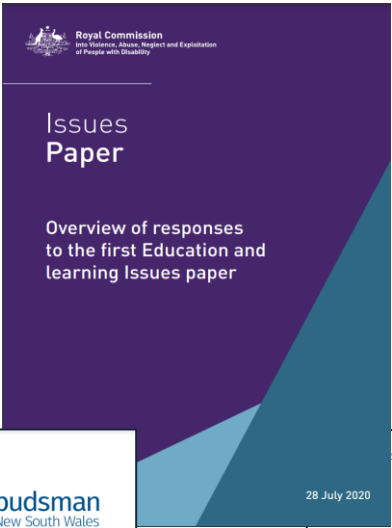
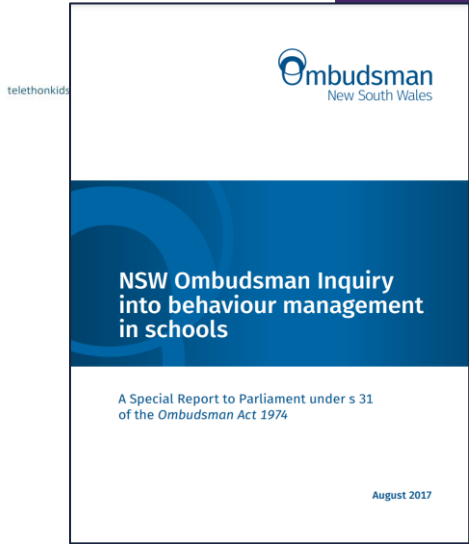
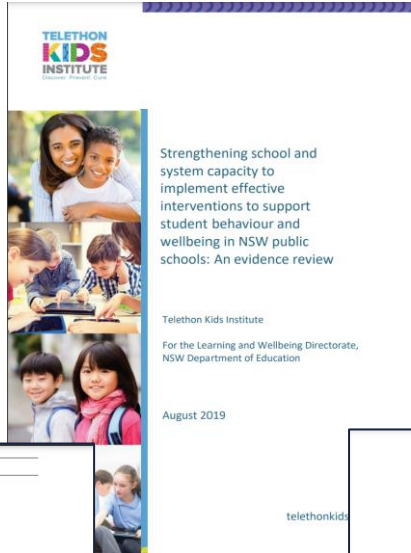
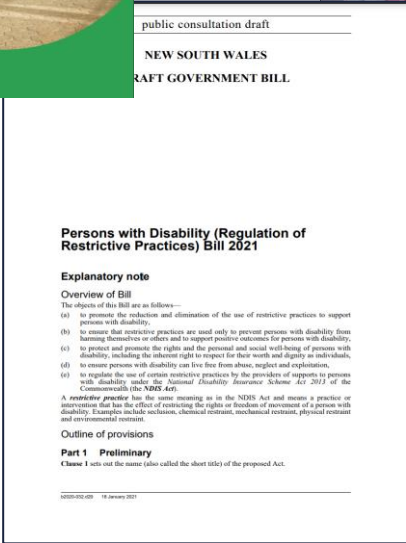
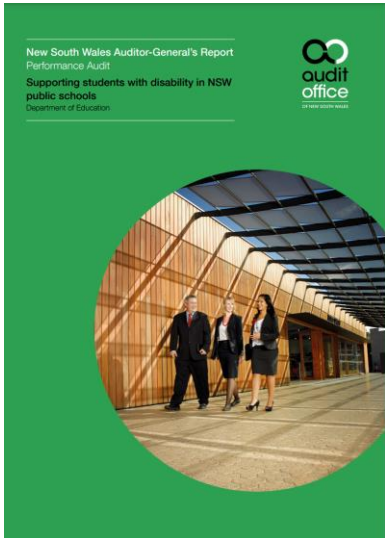
FACSIAR Lunch and Learn

16 February 2022



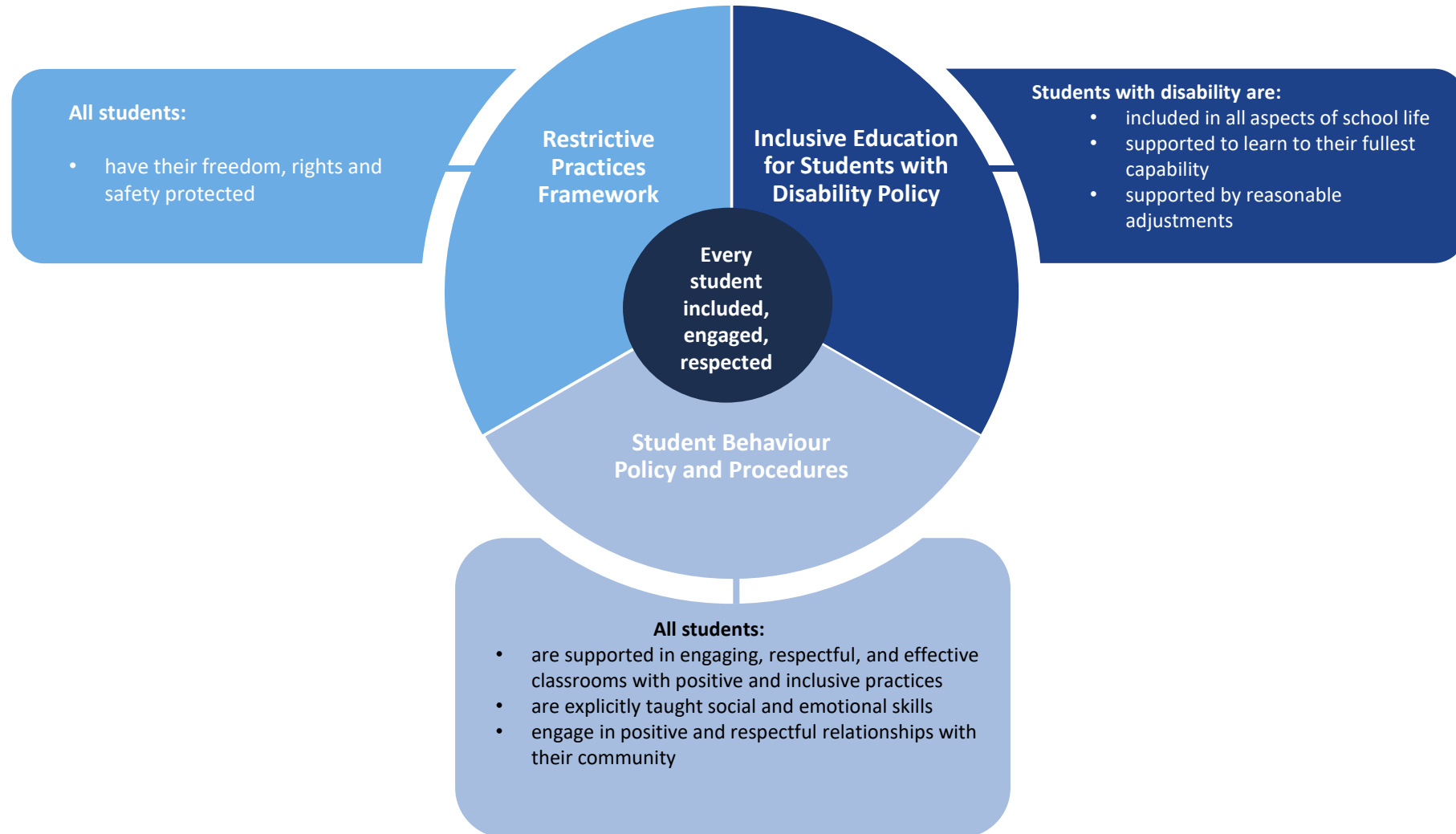
The need for systems reform

Independent inquiries highlight need for ongoing improvement



A commitment to inclusive education

Inclusive, engaging, respectful schools



What works – key principles



The Student Behaviour Strategy model

Practice

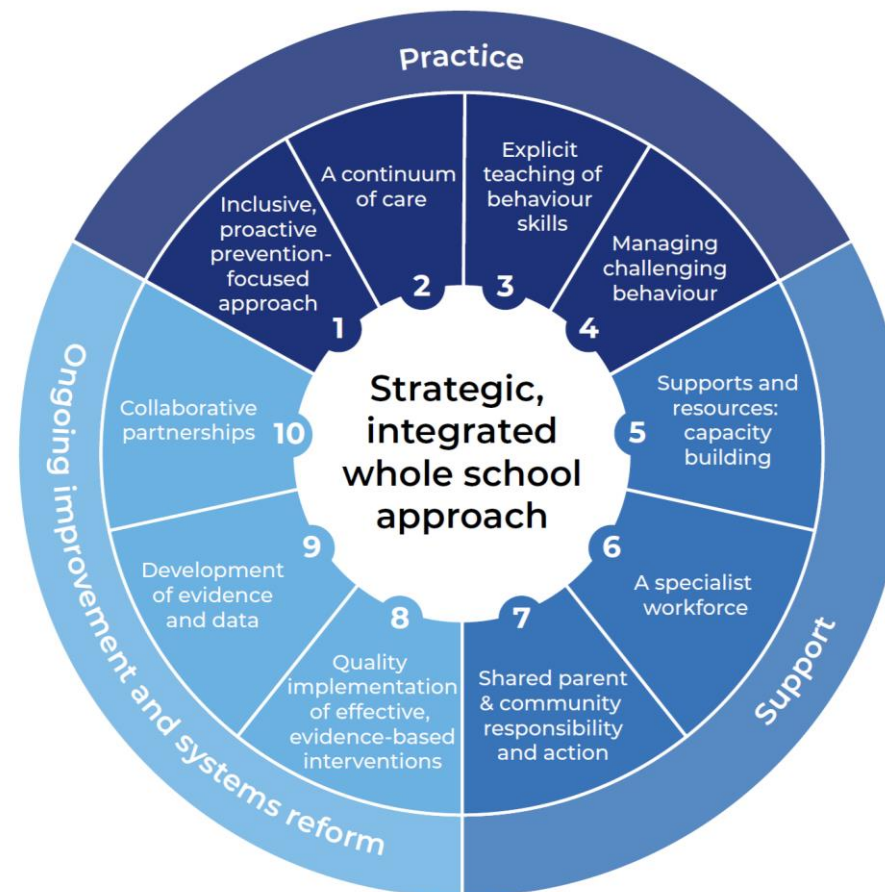
- teaching and behaviour management
- building positive behaviours and learning environments
- proactive and preventive approaches
- better options for managing challenging behaviours

Support

- supports and practice resources for schools, teachers, and parents

Ongoing improvement and systems reform

- build our evidence base
- measure outcomes and monitor progress
- establish what works best
- continue to collaborate with stakeholders
- update and expand tools and resources
- adapt our approaches.



Key policy changes for NSW public schools

Strengths-based, positive behaviour support approaches



- Lifting the threshold for use of suspension



- Reducing the maximums days for suspension



- Distinction between students in K-2 and 3-12



- Timeframes, recurrences and appeals

Inclusive Practice hub & Behaviour Support toolkit

Inclusive practice hub

Underpinning practice resources for schools to support students with disability and additional needs.

NSW Department of Education, in partnership with Deakin University are pleased to present the Inclusive Practice Hub, a platform that provides resources for schools to support students with disability and additional needs.

Access easy to download and print materials, learn from practical online resources and utilise evidence-based strategies to support and strengthen inclusive practice in schools.

Primary school

Check out all resources suitable for primary classrooms!

Go to resources >

Secondary school

Check out all resources suitable for secondary classrooms!

Go to resources >

Connect with us

Stay up to date with the Disability Strategy news and connect with us to learn your way.

Register your school >

Behaviour support toolkit

Student Behaviour Strategy

Underpinned by evidence and informed by input from our stakeholders, this Strategy encompasses three key areas: practice, support and ongoing improvement and systems reform.

Student Behaviour Strategy



The new Student Behaviour Strategy is supported by toolkits for parents, teachers and leaders to help them understand and promote positive student behaviour.

Support

Parents and carers

Advice and support for parents to help access support pathways.

Support

Teachers and school staff

Advice and support for teachers and all school staff to help them with student behaviour management.

Support

Leaders

Advice and support for school leaders to help them guide their staff with best practices and professional development.

How you can help

Flexible, solution-focussed approaches



Promote, encourage and support learning with children, young people and families



Social and emotional skill development



Encourage partnerships and build quality relationships



Wrap around support