

professionals.childhood.org.au

OurSPACE NSW

Specialist Outreach
Trauma Therapeutic Support
for Children in OOHC and their
important relationships

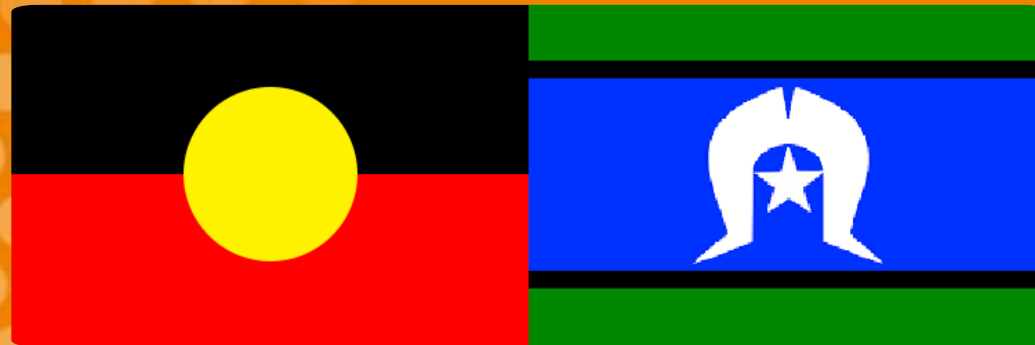


Communities
& Justice



Acknowledgment to Country

The Australian Childhood Foundation would like to acknowledge the Traditional Owners of the land on which this event is taking place, and Elders past, present and emerging. We would like to pay respect to the unique values of our First Nations people, and their continuing and enduring cultures which deepen and enrich the life of our nation and communities.



The Australian Childhood Foundation



Training & workshops



We work directly with over 1000 children per day nationally



International Childhood Trauma Conference



Web resources



Graduate Certificate in Developmental Trauma



Services in every State



Advocacy & research

OurSPACE NSW

- The OurSPACE Program directly addresses placement instability and builds relationship permanency for children and young people in out of home care regardless of location in NSW
- 55% of total number of children are Aboriginal and Torres Strait Islander
- Therapeutic Specialists travel to the child and move with them if their placement changes.
- 60% FTE Therapeutic Specialists are First Nations Professionals
- OurSPACE resources the network of adults to understand and respond to the unmet trauma needs.
- We create care teams that include Carers, Case Workers, School Teachers, and any important relationship to the child.



1604

referrals for direct outreach therapeutic support



21,702

total sessions



97%

of referrals accepted



122

number of children (cases) currently in program (at 15/08/2023)



32,951

hours of therapeutic support



102

children on the waitlist - 8 months wait time

ACA MOST RECENT



66

Aboriginal children



81

Non-Aboriginal children



327 Aboriginal children



502

Non-Aboriginal children



352

Aboriginal children



271

Non-Aboriginal children



147
TOTAL



9%
Of total referrals



904
TOTAL



51%
Of total referrals

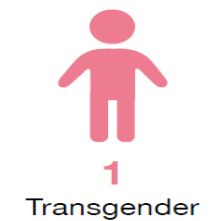
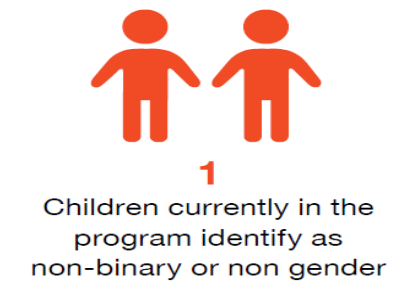
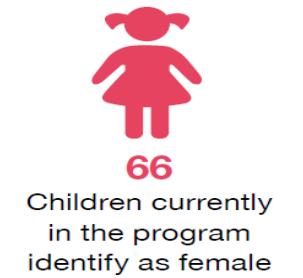
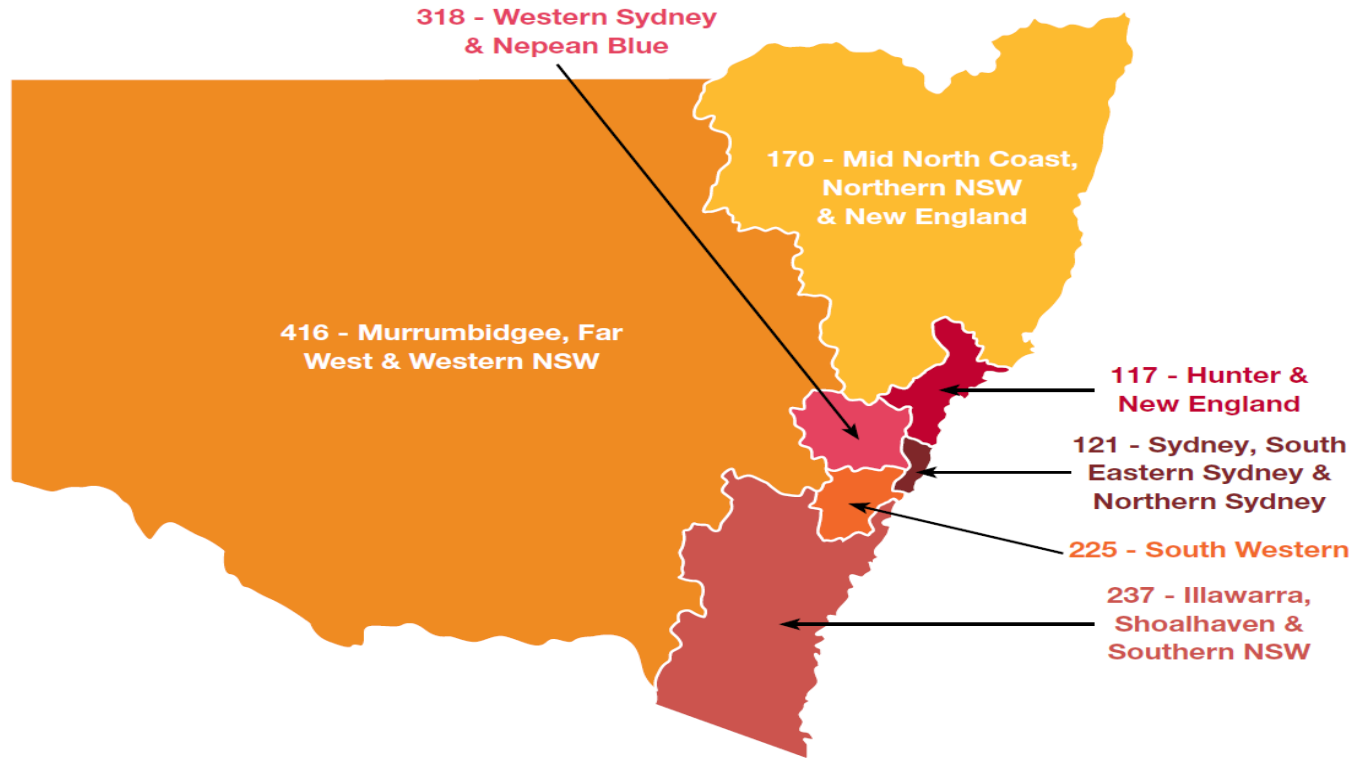


629
TOTAL



40%
Of total referrals

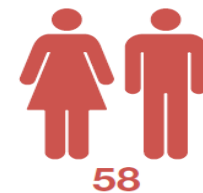
District map by referral count (since start)



Children currently in the program are aged 0-5yo



Children currently in the program are aged 6-10yo



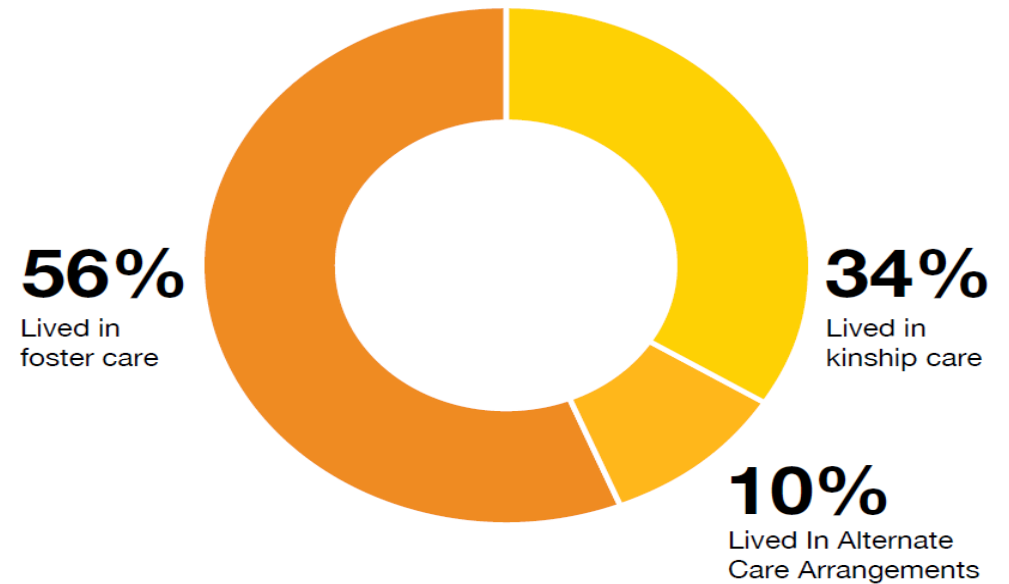
Children currently in the program are aged 11-15yo

Most children in OurSPACE were on long term orders

Care responsibility for children and young people in OurSPACE



Living arrangements for children and young people in OurSPACE

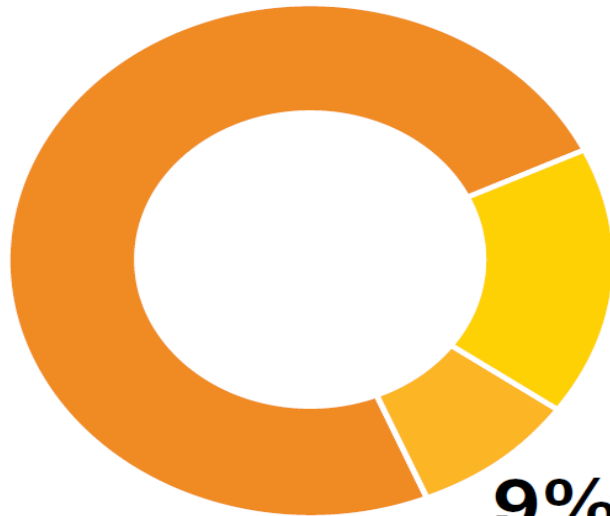


Children in OurSPACE experienced significant placement instability

Number of placements since coming into care

74%

Of children and young people in OurSPACE had 3-8 placements since coming into care



17%

Of children and young people in OurSPACE had 9 or more placements since coming into care

9%

Of children and young people in OurSPACE had 1-2 placements since coming into care

78%

Of children and young people in OurSPACE had lived in their placement for less than 12 months



42%

Of children and young people in OurSPACE had a quality of care incident in their placement leading to their removal from placement within the last six months



Loss of Sibling Connection

52%

Of children and young people in OurSPACE had no contact or unplanned or sporadic contact with their siblings



63%

Of children and young people in OurSPACE had no contact or unplanned or sporadic contact with extended family



Most Children experienced extensive abuse and neglect over a long period of time, beginning prior to the age of One.

Period of abuse for children and young people in OurSPACE

30%

Multiple incidents and unknown



48%

More than 5 years

98%

Of children and young people first experience abuse before 12 months old



Children in OurSPACE experienced multiple domains of abuse and neglect

97%

Of children and young people in OurSPACE had experienced emotional and psychological abuse



64%

Of children and young people in OurSPACE had been subject to sexual abuse



The top 5 forms of emotional/psychological abuse were:

68%

Witnessing ongoing verbal conflict between parents

61%

Witnessing ongoing physical violence between parents

59%

Extreme neglect by caregivers

58%

Abandonment

51%

Emotional/psychological isolation

98%

Of children and young people in OurSPACE had experienced physical abuse ranging from being kicked, punched, hit with an object



Most children were impacted significantly from experiences of abuse and neglect

52%

Of children and young people in OurSPACE had been diagnosed with a developmental delay



47%

Of children and young people in OurSPACE had suffered from failure to thrive early in their life



84%

Of children and young people in OurSPACE suffered from sleep disturbances



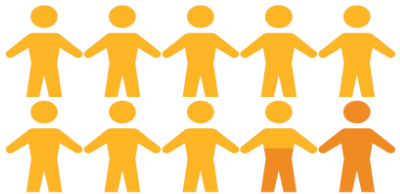
84%

Of children and young people in OurSPACE suffered from significant anxiety



83%

Of children and young people in OurSPACE suffered from poor self esteem



86%

Of children and young people in OurSPACE suffered from poor peer relationships



69%

Of children and young people in OurSPACE displayed severe physically aggressive behaviour



27%

Of children and young people in OurSPACE had engaged in harmful sexual behaviour



OurSPACE supported most children to begin to heal

FACSIAR - Measuring indicators of 'Home' and 'Safety' in OurSPACE program Jan 22

Sample of 184 12 months on from completion (94 of whom were Aboriginal (52%))

Aggregate of 419 ROSH reports over 12-month period prior to acceptance. An average of 4 ROSH reports each child.

80 (44%) had no further ROSH.

127 without any change of placement (70%)

**Data recorded 12 months prior and then 12 months post involvement in the OurSPACE program*

Reduction in criminal activity

79% ↓

Children showed a reduction in trauma symptoms as a result of OurSPACE



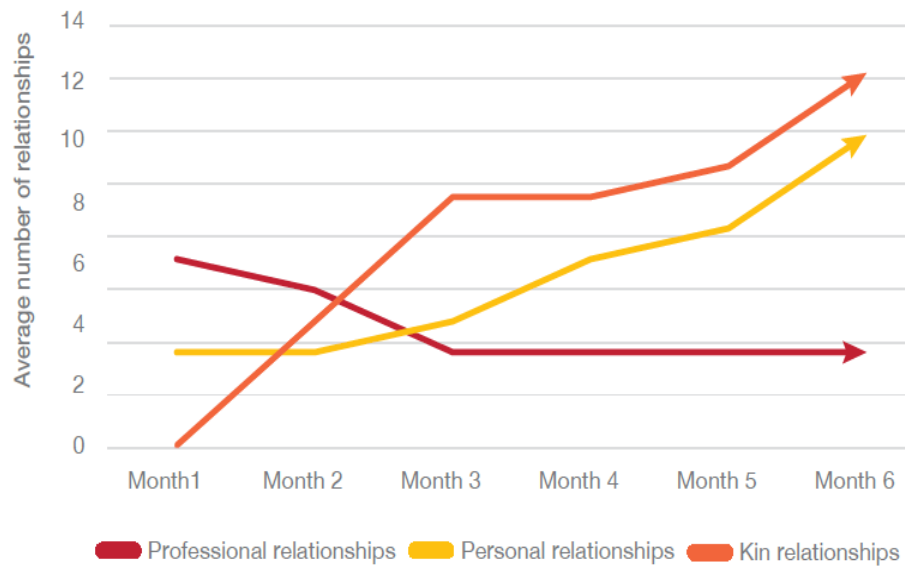
84% ↓

Children showed a reduction in criminal activity if they were involved in Youth Justice at time or referral to OurSPACE

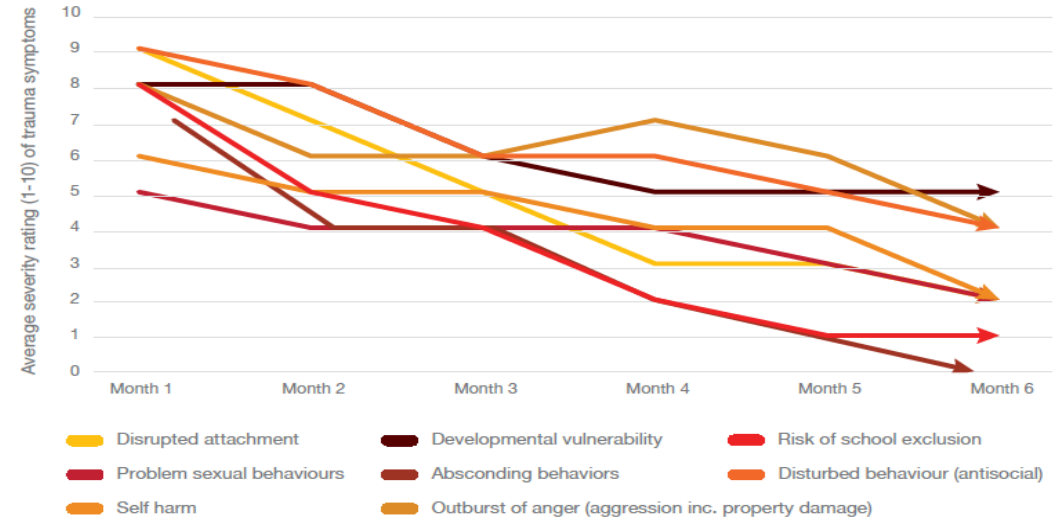


Improvement in Relationship permanence and reduction in trauma symptoms

OurSPACE improved the relationship permanence of children and young people

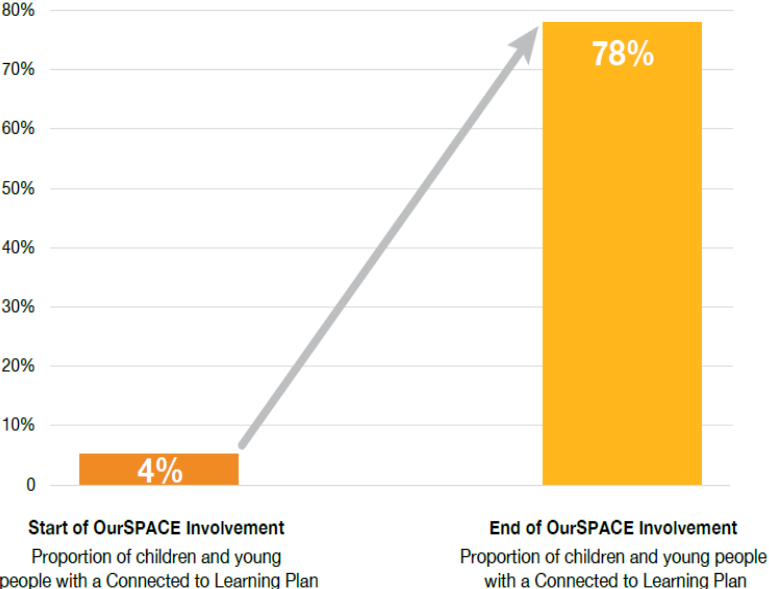


OurSPACE reduced the severity rating of trauma symptoms for children and young people over six months



Re-connection to learning

OurSPACE increased proportion of children with a formal education plan



29%
Of children and young people moved to vocational learning program

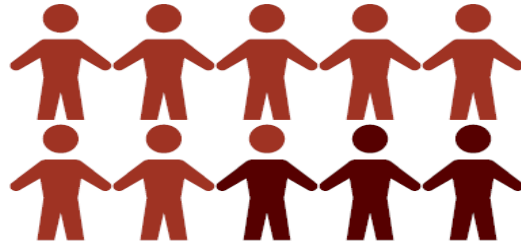
65%
Of children and young people experienced an increase in school attendance

6% Of children and young people remain disengaged from the education system

OurSPACE has supported the connection of Aboriginal children to Kin and Country

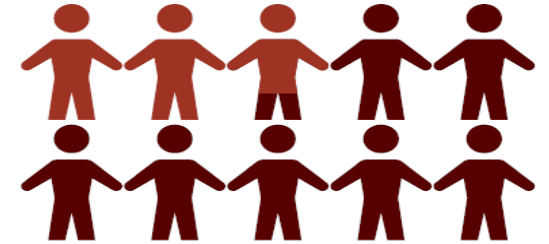
72%

Of Aboriginal children referred to OurSPACE engaged with family for the first time



28%

Of Aboriginal children referred to OurSPACE were restored to family permanently



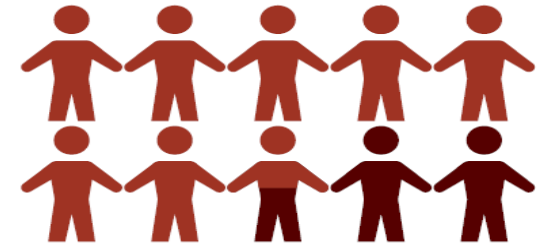
98%

Of all Aboriginal clients received a cultural consultation prior to allocation



74%

Of Aboriginal clients increased their cultural connection to kin and country



79%

Of Aboriginal clients showed a significant reduction on trauma expressions (reported by carer)



71%

Of Aboriginal clients developed more meaningful connection to siblings (not living in the same placement)



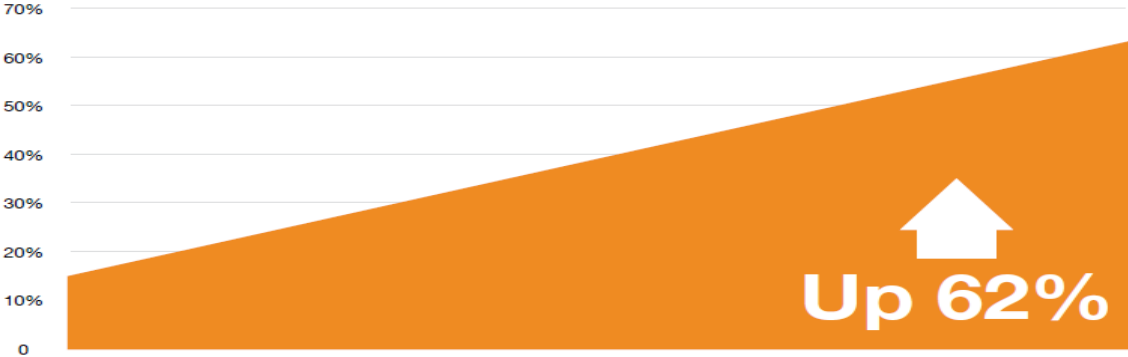
Care teams were better resourced



83%

Of care teams were better equipped to understand the trauma need of children as a result of OurSPACE

OurSPACE built the capacity of care teams to function effectively

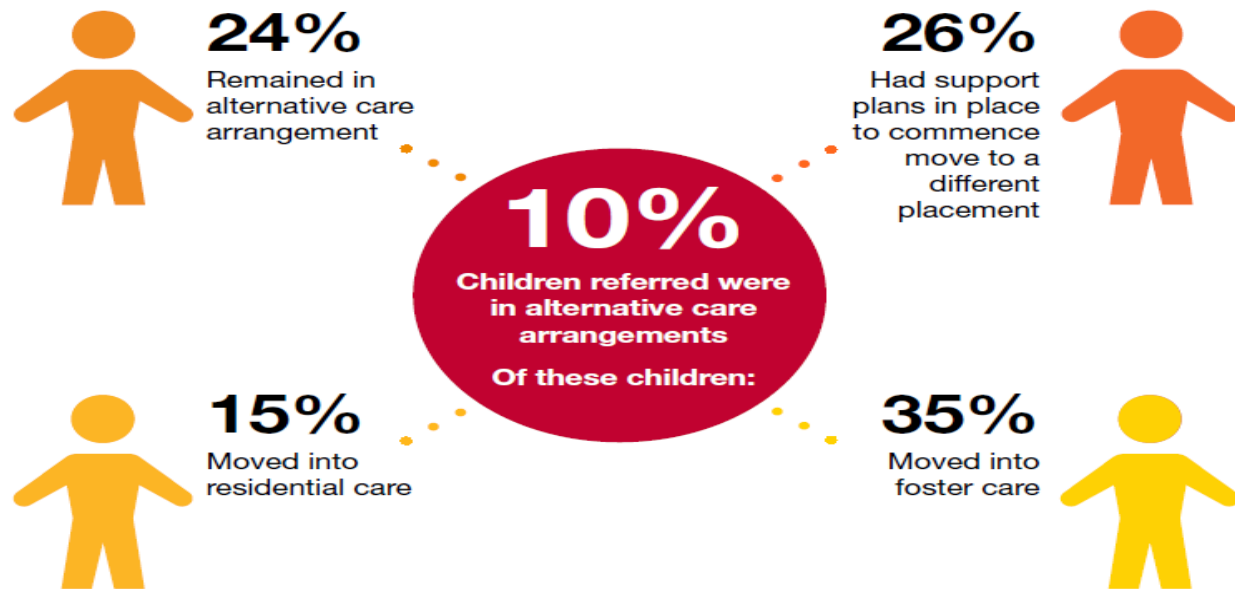


Proportion of care teams which were cohesive, trauma informed and proactive in their planning at start of OurSPACE involvement

Proportion of care teams which were cohesive, trauma informed and proactive in their planning at end of OurSPACE involvement

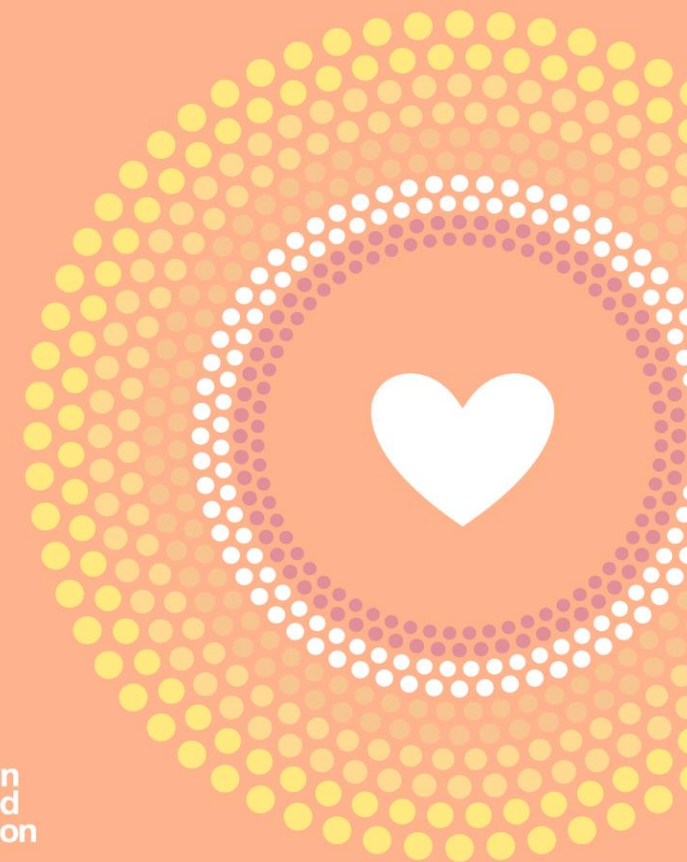
ACA's

3.3 OurSPACE was effective in supporting transition of children out of ACA's



Our SPACE+

A proposal to provide intensive therapeutic support to children, young people in Alternative environments of care



Australian
Childhood
Foundation

Improvement in placement outcomes

22%

Of children were moved to a more stable placement



54%

Of children had their placement on referral stabilised

7%

Of children experienced no improvement and placement was at significant risk

17%

Of children continued to require intensive support to stabilise their care arrangements

“The biggest barrier to stable placements for children in OOHC is the misinterpretation of the language (behaviour) of the child and how those around them respond to it”

OurSPACE 2019

professionals.childhood.org.au

OurSPACE

1300 381 581

intakeourspace@childhood.org.au

