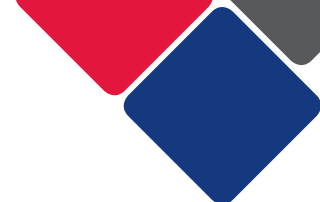


Northern NSW District Data Profile

Mid North Coast, New England
and Northern NSW





Contents

| | |
|--|-----------|
| Introduction | 4 |
| Demographic Data | 7 |
| Population - Northern NSW | 7 |
| Aboriginal and Torres Strait Islander population | 9 |
| Country of birth | 11 |
| Languages spoken at home | 13 |
| Migration streams | 16 |
| Children and Young People | 17 |
| Government schools | 17 |
| Early childhood development | 26 |
| Vulnerable children and young people | 31 |
| Contact with child protection services | 34 |
| Economic Environment | 35 |
| Education | 35 |
| Employment | 37 |
| Income | 39 |
| Socio-economic advantage and disadvantage | 41 |
| Social Environment | 42 |
| Community safety and crime | 42 |





| | |
|--|-----------|
| Maternal Health | 45 |
| Teenage pregnancy | 45 |
| Smoking during pregnancy | 46 |
| Australian Mothers Index | 47 |
| Disability | 48 |
| Need for assistance with core activities | 48 |
| Households and Social Housing | 49 |
| Households | 49 |
| Tenure types | 50 |
| Housing affordability | 51 |
| Social housing | 53 |



Introduction

This document presents a brief data profile for the Northern New South Wales (NSW) district. It contains a series of tables and graphs that show the characteristics of persons, families and communities. It includes demographic, housing, child development, community safety and child protection information.

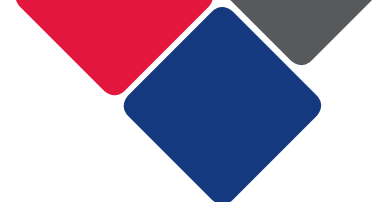
Where possible, we present this information at the local government area (LGA) level.

In the Northern NSW district, there are seven LGAs:

- Ballina
- Byron
- Clarence Valley
- Kyogle
- Lismore
- Richmond Valley
- Tweed

The data presented in this document is from a number of different sources, including:

- Australian Bureau of Statistics (ABS)
- Bureau of Crime Statistics and Research (BOCSAR)
- NSW Health Stats
- Australian Early Developmental Census (AEDC)
- NSW Government administrative data.



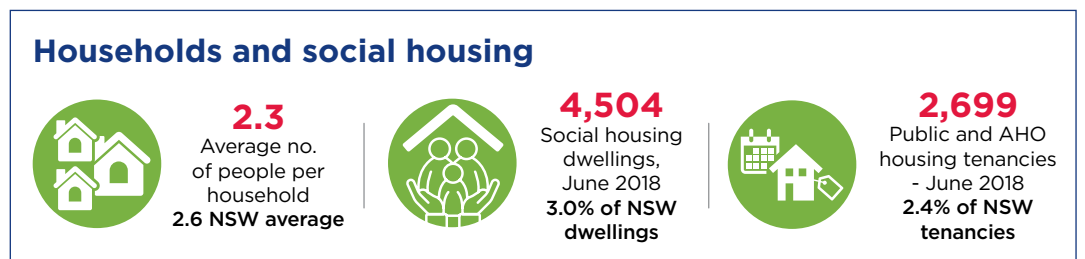
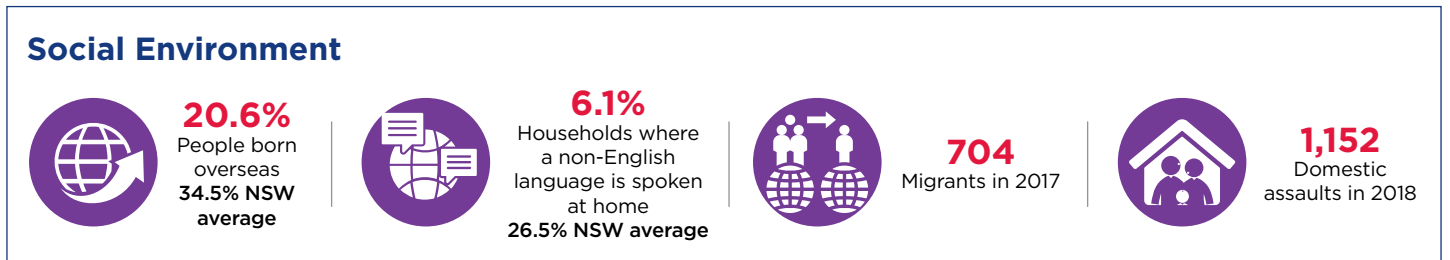
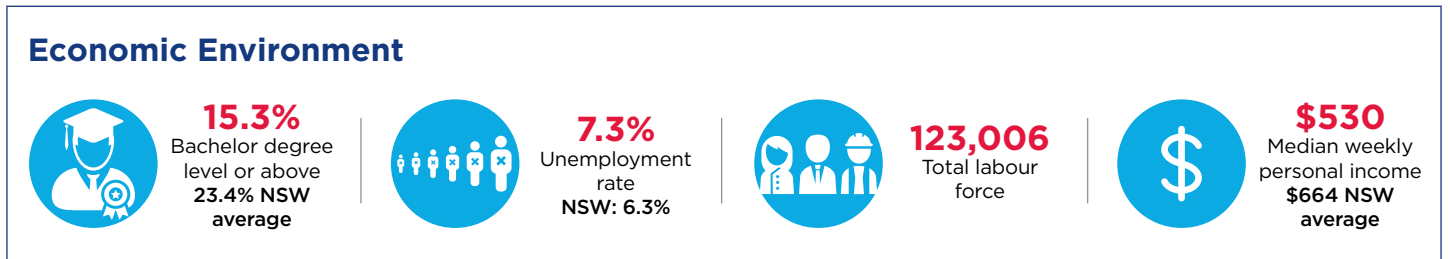
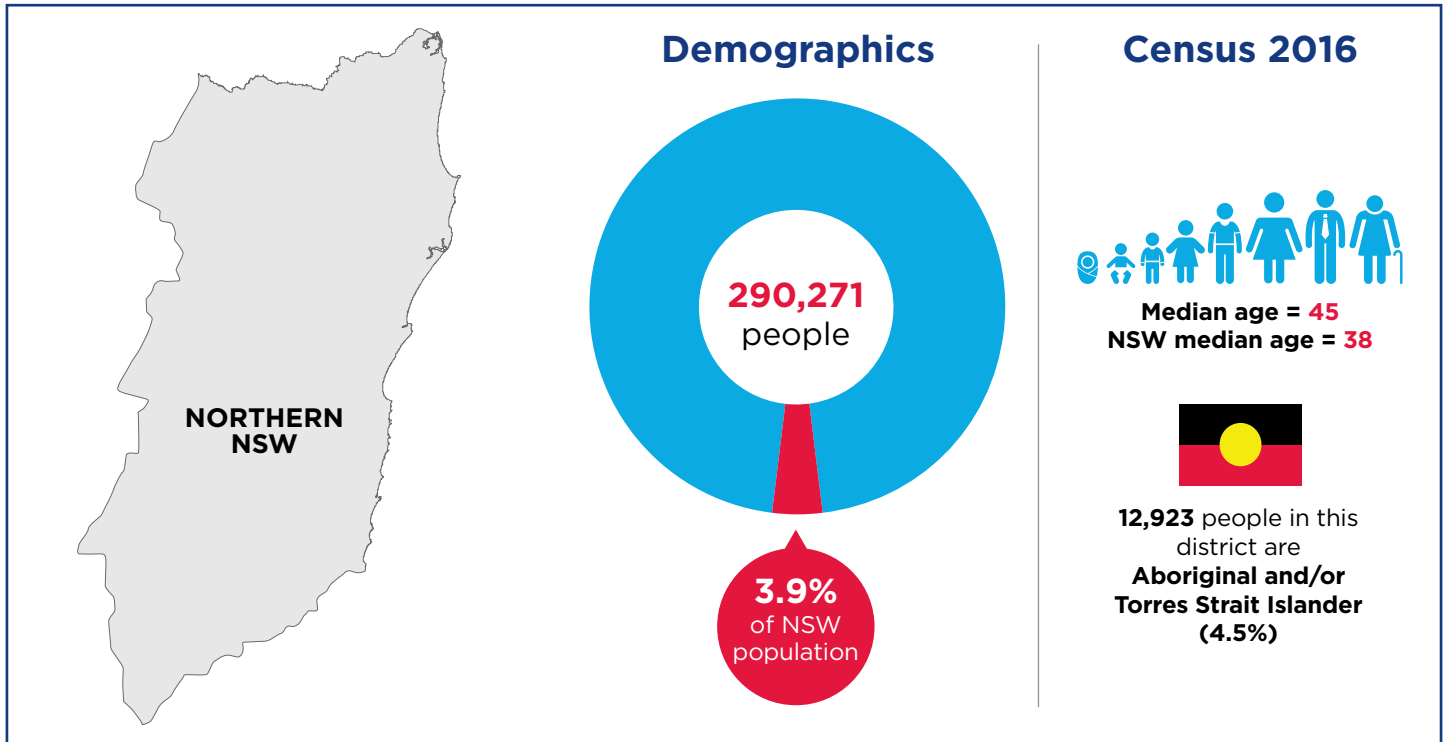
The majority of these sources are publicly available. We have provided source statements for each table and graph. This tells you where the data comes from and where you can find more information.

Please note, the information in the original sources may change as authors (e.g. ABS, NSW Healthstats) update the data. As such, we have also recorded the date we accessed the information.

If you would like additional suburb-level and Aboriginal and Torres Strait Islander specific data, the following sources are available to you:

- The ABS provides demographic, cultural and linguistic diversity, employment and housing data at a suburb level through Quick Stats: <https://www.abs.gov.au/websitedbs/D3310114.nsf/Home/2016%20QuickStats>. For example, for the Byron Bay suburb, select 'Byron Bay, NSW: State Suburb (SSC)' from the drop down menu.
- The ABS also ranks suburbs on the Socio-Economic Indexes for Areas (SEIFA): http://stat.data.abs.gov.au/Index.aspx?DataSetCode=SEIFA_SSC. For more information on the SEIFA, see page 100.
- BOSCAR records criminal offences at a suburb level: https://www.bocsar.nsw.gov.au/Pages/bocsar_datasets/Datasets-.aspx. Follow the 'Suburb' link in the Geographic breakdown category for a spreadsheet containing all suburb-level crime data.
- Information about Aboriginal and Torres Strait Islander persons, families and dwellings, including comparisons with non-Indigenous people, is also available at LGA level through the ABS 2016 Census Community Profiles: <https://www.abs.gov.au/websitedbs/D3310114.nsf/Home/2016%20Census%20Community%20Profiles>. For example, for information about the Aboriginal and Torres Strait Islander population of Byron, select 'Byron (C), NSW: Local Government Area (LGA)' from the drop down menu, and follow the link for the 'Aboriginal and Torres Strait Islander Peoples Profile'.

Northern NSW District

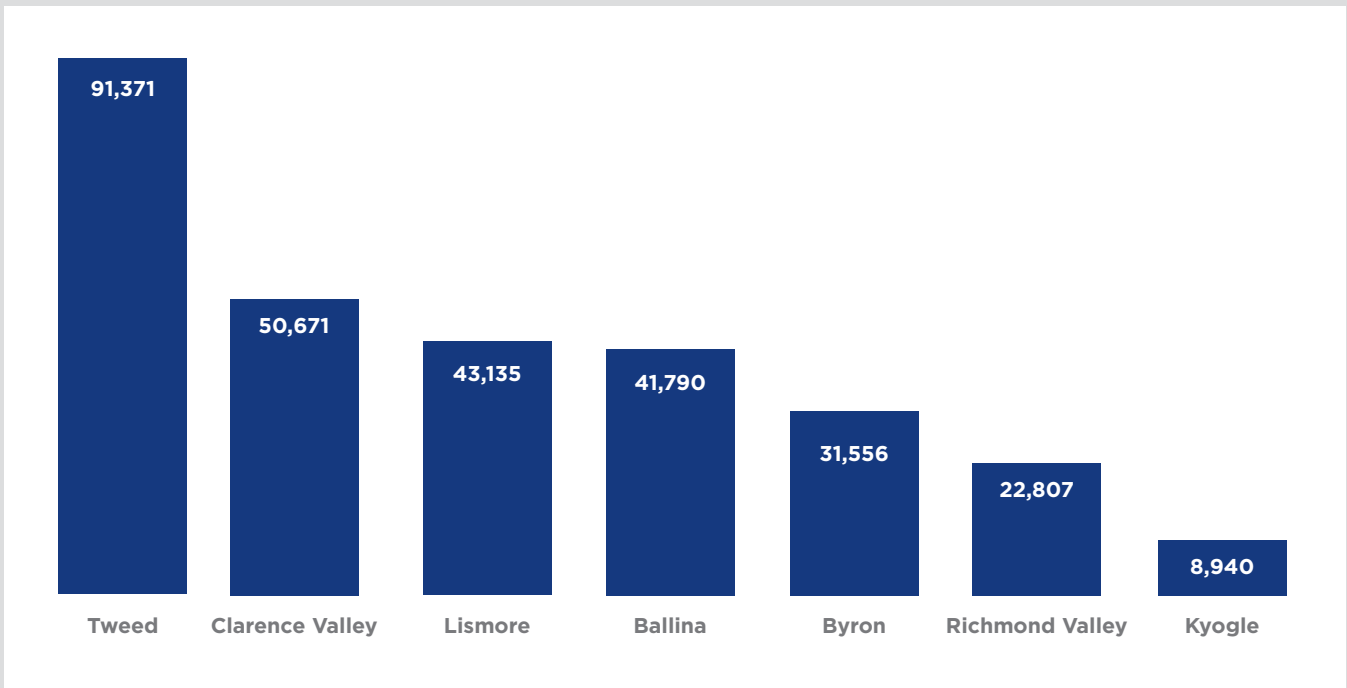


Demographic Data

Population – Northern NSW

The population in the Northern NSW district was estimated at 290,271 in the 2016 Census. This district is made up of seven local government areas (LGAs). The largest LGA is Tweed with an estimated population of 91,371. The smallest LGA is Kyogle with an estimated population of 8,940 (see Figure 1).

Figure 1. Population of Northern NSW District, by LGA



Source: ABS Quickstats, 2016 Census: <https://www.abs.gov.au/websitedbs/D3310114.nsf/Home/2016%20QuickStats> (accessed 30 September 2019)

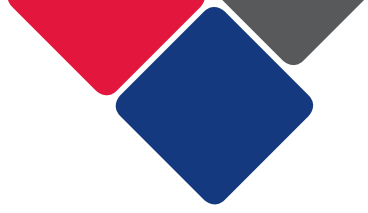
The median age in New South Wales is 38 years of age. In the Northern NSW district, all LGAs have a higher median age. Lismore has the lowest median age of 43, followed by Byron and Richmond Valley, both with a median age of 44. Kyogle has the highest median age at 50.

Table 1 shows a breakdown of age for each LGA in the Northern NSW district.

Table 1. Age breakdown of the population by LGA in Northern NSW

| Age Group (years) | Ballina | | Byron | | Clarence Valley | | Kyogle | | Lismore | | Richmond Valley | | Tweed | | Northern NSW | |
|---------------------|---------------|-------------|---------------|-------------|-----------------|-------------|--------------|------------|---------------|-------------|-----------------|------------|---------------|-------------|------------------|------------|
| | No. | % | No. | % | No. | % | No. | % | No. | % | No. | % | No. | % | No. | % |
| 0-4 | 2,072 | 5.0 | 1,553 | 4.9 | 2,470 | 4.9 | 388 | 4.3 | 2,256 | 5.2 | 1,371 | 6.0 | 4,779 | 5.2 | 14,889 | 5.1 |
| 5-9 | 2,448 | 5.9 | 1,851 | 5.9 | 2,961 | 5.8 | 536 | 6.0 | 2,715 | 6.3 | 1,508 | 6.6 | 5,365 | 5.9 | 17,384 | 6.0 |
| 10-14 | 2,409 | 5.8 | 1,882 | 6.0 | 2,880 | 5.7 | 536 | 6.0 | 2,733 | 6.3 | 1,488 | 6.5 | 5,183 | 5.7 | 17,111 | 5.9 |
| 15-19 | 2,384 | 5.7 | 1,607 | 5.1 | 2,961 | 5.8 | 502 | 5.6 | 2,785 | 6.5 | 1,505 | 6.6 | 4,990 | 5.5 | 16,734 | 5.7 |
| 20-24 | 1,571 | 3.8 | 1,194 | 3.8 | 2,047 | 4.0 | 329 | 3.7 | 2,444 | 5.7 | 1,116 | 4.9 | 3,929 | 4.3 | 12,630 | 4.3 |
| 25-29 | 1,616 | 3.9 | 1,651 | 5.2 | 2,087 | 4.1 | 287 | 3.2 | 2,142 | 5.0 | 1,023 | 4.5 | 3,675 | 4.0 | 12,481 | 4.3 |
| 30-34 | 1,966 | 4.7 | 1,747 | 5.5 | 2,061 | 4.1 | 350 | 3.9 | 2,253 | 5.2 | 966 | 4.2 | 4,542 | 5.0 | 13,885 | 4.8 |
| 35-39 | 2,089 | 5.0 | 2,001 | 6.3 | 2,305 | 4.5 | 376 | 4.2 | 2,450 | 5.7 | 1,131 | 5.0 | 4,763 | 5.2 | 15,115 | 5.2 |
| 40-44 | 2,574 | 6.2 | 2,387 | 7.6 | 2,836 | 5.6 | 478 | 5.3 | 2,677 | 6.2 | 1,334 | 5.9 | 5,502 | 6.0 | 17,788 | 6.1 |
| 45-49 | 2,793 | 6.7 | 2,389 | 7.6 | 3,051 | 6.0 | 596 | 6.7 | 2,894 | 6.7 | 1,375 | 6.0 | 5,771 | 6.3 | 18,869 | 6.5 |
| 50-54 | 2,972 | 7.1 | 2,497 | 7.9 | 3,657 | 7.2 | 763 | 8.5 | 3,232 | 7.5 | 1,560 | 6.8 | 6,145 | 6.7 | 20,826 | 7.1 |
| 55-59 | 3,210 | 7.7 | 2,746 | 8.7 | 4,150 | 8.2 | 882 | 9.9 | 3,447 | 8.0 | 1,609 | 7.1 | 6,942 | 7.6 | 22,986 | 7.9 |
| 60-64 | 3,226 | 7.7 | 2,742 | 8.7 | 4,199 | 8.3 | 864 | 9.7 | 3,250 | 7.5 | 1,695 | 7.4 | 6,639 | 7.3 | 22,615 | 7.8 |
| 65 and above | 10,459 | 25 | 5,324 | 16.9 | 13,000 | 25.7 | 2,053 | 23 | 7,852 | 18.2 | 5,120 | 22.6 | 23,141 | 25.4 | 66,949 | 23 |
| Total | 41,789 | 14.4 | 31,571 | 10.8 | 50,665 | 17.4 | 8,940 | 3.0 | 43,130 | 14.8 | 22,801 | 7.9 | 91,366 | 31.5 | 290,262 | 100 |
| Total in NSW | | | | | | | | | | | | | | | 7,480,228 | 3.9 |

Source: ABS Quickstats, 2016 Census: <https://www.abs.gov.au/websitedbs/D3310114.nsf/Home/2016%20QuickStats> (accessed 30 September 2019)



Aboriginal and Torres Strait Islander population

In the Northern NSW, 12,923 (4.5%) of the population identify as Aboriginal and/or Torres Strait Islander (see Table 2). The majority of these people are children and young people, 45% of the Aboriginal and Torres Strait Islander population in the Northern NSW district are 19 years old or younger.

Table 2. Population of Aboriginal and Torres Strait Islander in Northern NSW, by Age

| Age Group (years) | Ballina | | Byron | | Clarence Valley | | Kyogle | | Lismore | | Richmond Valley | | Tweed | | Northern NSW | |
|----------------------|--------------|------------|------------|------------|-----------------|------------|------------|------------|--------------|------------|-----------------|------------|--------------|------------|-------------------------------|------------|
| | No. | % | No. | % | No. | % | No. | % | No. | % | No. | % | No. | % | No. | % |
| 0-4 | 134 | 9.8 | 46 | 8.2 | 366 | 11.4 | 35 | 9.5 | 235 | 10.9 | 196 | 12.0 | 343 | 9.5 | 1,355 | 10.5 |
| 5-9 | 158 | 11.5 | 47 | 8.4 | 402 | 12.5 | 41 | 11.1 | 262 | 12.1 | 222 | 13.6 | 426 | 11.8 | 1,558 | 12.1 |
| 10-14 | 152 | 11.1 | 61 | 10.8 | 350 | 10.9 | 35 | 9.5 | 270 | 12.5 | 207 | 12.7 | 418 | 11.6 | 1,493 | 11.6 |
| 15-19 | 135 | 9.8 | 58 | 10.3 | 340 | 10.6 | 37 | 10.1 | 239 | 11.0 | 171 | 10.5 | 411 | 11.4 | 1,391 | 10.8 |
| 20-24 | 105 | 7.6 | 49 | 8.7 | 240 | 7.5 | 27 | 7.3 | 183 | 8.5 | 141 | 8.7 | 280 | 7.7 | 1,025 | 7.9 |
| 25-29 | 84 | 6.1 | 44 | 7.8 | 201 | 6.3 | 15 | 4.1 | 125 | 5.8 | 94 | 5.8 | 192 | 5.3 | 755 | 5.8 |
| 30-34 | 72 | 5.3 | 23 | 4.1 | 182 | 5.7 | 13 | 3.5 | 122 | 5.6 | 84 | 5.2 | 221 | 6.1 | 717 | 5.5 |
| 35-39 | 62 | 4.5 | 28 | 5.0 | 150 | 4.7 | 24 | 6.5 | 127 | 5.9 | 68 | 4.2 | 164 | 4.5 | 623 | 4.8 |
| 40-44 | 102 | 7.4 | 51 | 9.1 | 170 | 5.3 | 31 | 8.4 | 112 | 5.2 | 83 | 5.1 | 221 | 6.1 | 770 | 6.0 |
| 45-49 | 87 | 6.4 | 44 | 7.8 | 178 | 5.5 | 21 | 5.7 | 137 | 6.3 | 87 | 5.3 | 209 | 5.8 | 763 | 5.9 |
| 50-54 | 71 | 5.2 | 24 | 4.3 | 172 | 5.4 | 26 | 7.1 | 121 | 5.6 | 86 | 5.3 | 196 | 5.4 | 696 | 5.4 |
| 55-59 | 60 | 4.4 | 29 | 5.1 | 158 | 4.9 | 21 | 5.7 | 90 | 4.2 | 65 | 4.0 | 166 | 4.6 | 589 | 4.6 |
| 60-64 | 50 | 3.6 | 23 | 4.1 | 109 | 3.4 | 18 | 4.9 | 76 | 3.5 | 65 | 4.0 | 130 | 3.6 | 471 | 3.6 |
| 65 and above | 98 | 7.2 | 35 | 6.2 | 195 | 6.1 | 24 | 6.5 | 66 | 3.0 | 60 | 3.7 | 239 | 6.6 | 717 | 5.5 |
| Total | 1,370 | 100 | 562 | 100 | 3,213 | 100 | 368 | 100 | 2,165 | 100 | 1,629 | 100 | 3,616 | 100 | 12,923 | 100 |
| % of LGA pop. | 3.3 | | 1.8 | | 6.3 | | 4.3 | | 5.0 | | 7.1 | | 4.0 | | % of district pop. 4.5 | |

Source: ABS Community Profiles, Aboriginal and Torres Strait Islander Peoples Profile, 2016 Census: <https://www.abs.gov.au/websitedbs/D3310114.nsf/Home/2016%20Census%20Community%20Profiles> (accessed 30 September 2019)

Country of birth

In the Northern NSW district, 79.4% of residents were born in Australia (see Table 3). This is slightly higher than the New South Wales state average of 65.5%. The most common birthplaces, other than Australia, were England, New Zealand, Germany, the Philippines, and Scotland.

Table 3. Country of Birth in Northern NSW, by LGA

| Ballina | | | Byron | | |
|----------------------------|--------|------|--------------------------|--------|------|
| Country | No. | % | Country | No. | % |
| Australia | 33,981 | 81.3 | Australia | 21,558 | 68.4 |
| Other top responses | | | | | |
| England | 1421 | 3.4 | England | 1620 | 5.1 |
| New Zealand | 657 | 1.6 | New Zealand | 752 | 2.4 |
| South Africa | 232 | 0.6 | Germany | 341 | 1.1 |
| Scotland | 172 | 0.4 | United States of America | 332 | 1.1 |
| Netherlands | 152 | 0.4 | South Africa | 176 | 0.6 |

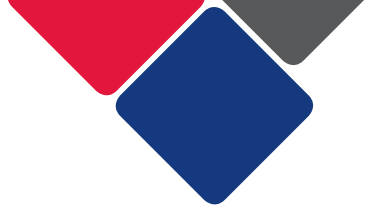
| Clarence Valley | | | Kyogle | | |
|----------------------------|--------|------|-------------|-------|------|
| Country | No. | % | Country | No. | % |
| Australia | 42,432 | 83.8 | Australia | 7,144 | 80.2 |
| Other top responses | | | | | |
| England | 1283 | 2.5 | England | 256 | 2.9 |
| New Zealand | 560 | 1.1 | New Zealand | 136 | 1.5 |
| Netherlands | 162 | 0.3 | Germany | 55 | 0.6 |
| Germany | 157 | 0.3 | Scotland | 33 | 0.4 |
| Philippines | 154 | 0.3 | Philippines | 29 | 0.3 |

Table 3. Country of Birth in Northern NSW, by LGA (continued)

| Lismore | | | Richmond Valley | | |
|----------------------------|--------|------|-----------------|--------|------|
| Country | No. | % | Country | No. | % |
| Australia | 35,353 | 82.0 | Australia | 19,421 | 85.3 |
| Other top responses | | | | | |
| England | 1052 | 2.4 | England | 370 | 1.6 |
| New Zealand | 528 | 1.2 | New Zealand | 218 | 1.0 |
| Germany | 220 | 0.5 | Philippines | 111 | 0.5 |
| Italy | 172 | 0.4 | Scotland | 53 | 0.2 |
| Philippines | 160 | 0.4 | Netherlands | 48 | 0.2 |

| Tweed | | |
|----------------------------|--------|------|
| Country | No. | % |
| Australia | 70,479 | 77.2 |
| Other top responses | | |
| England | 4400 | 4.8 |
| New Zealand | 2530 | 2.8 |
| Scotland | 524 | 0.6 |
| Philippines | 467 | 0.5 |
| Germany | 428 | 0.5 |

Source: ABS Quickstats, 2016 Census: <https://www.abs.gov.au/websitedbs/D3310114.nsf/Home/2016%20QuickStats> (accessed 30 September 2019)



Languages spoken at home

In the Northern NSW district, over 80% of residents spoke only English at home. This is higher than the New South Wales state average of 68.5%.

The proportion of households where a non-English language was spoken at home was highest in Byron, at 9.0%. This was followed by Lismore (6.7%) and Tweed 5.9% (see Table 4).

Table 4. Languages spoken at home in Northern NSW, by LGA

| Ballina | | | Byron | | |
|---|--------|------|---|--------|------|
| | No. | % | | No. | % |
| English only spoken at home | 37,214 | 89.1 | English only spoken at home | 25,554 | 81.1 |
| Households where a non-English language is spoken | 928 | 5.3 | Households where a non-English language is spoken | 1,211 | 9.0 |
| Top responses other than English | | | | | |
| German | 143 | 0.3 | German | 318 | 1.0 |
| Italian | 143 | 0.3 | French | 223 | 0.7 |
| Spanish | 104 | 0.2 | Italian | 202 | 0.6 |
| French | 103 | 0.2 | Hebrew | 192 | 0.6 |
| Dutch | 76 | 0.2 | Spanish | 177 | 0.6 |

| Clarence Valley | | | Kyogle | | |
|---|--------|------|---|-------|------|
| | No. | % | | No. | % |
| English only spoken at home | 45,752 | 90.3 | English only spoken at home | 7,878 | 88.1 |
| Households where a non-English language is spoken | 704 | 3.2 | Households where a non-English language is spoken | 145 | 3.7 |
| Top responses other than English | | | | | |
| German | 91 | 0.2 | German | 39 | 0.4 |
| Cantonese | 75 | 0.1 | French | 17 | 0.2 |
| Spanish | 61 | 0.1 | Italian | 15 | 0.2 |
| Mandarin | 59 | 0.1 | Japanese | 15 | 0.2 |
| Dutch | 58 | 0.1 | Telugu | 14 | 0.2 |

Table 4. Languages spoken at home in Northern NSW, by LGA (continued)

| Lismore | | | Richmond Valley | | |
|---|--------|------|---|--------|------|
| | No. | % | | No. | % |
| English only spoken at home | 37,762 | 87.5 | English only spoken at home | 20,630 | 90.5 |
| Households where a non-English language is spoken | 1,182 | 6.7 | Households where a non-English language is spoken | 288 | 3.0 |
| Top responses other than English | | | | | |
| Italian | 301 | 0.7 | Tagalog | 41 | 0.2 |
| German | 203 | 0.5 | Italian | 37 | 0.2 |
| French | 105 | 0.2 | Mandarin | 31 | 0.1 |
| Spanish | 94 | 0.2 | German | 28 | 0.1 |
| Mandarin | 88 | 0.2 | Dutch | 24 | 0.1 |

| Tweed | | |
|---|--------|------|
| | No. | % |
| English only spoken at home | 81,054 | 88.7 |
| Households where a non-English language is spoken | 2285 | 5.9 |
| Top responses other than English | | |
| German | 319 | 0.3 |
| Japanese | 273 | 0.3 |
| Punjabi | 245 | 0.3 |
| Italian | 226 | 0.2 |
| Mandarin | 224 | 0.2 |

Source: ABS Quickstats, 2016 Census: <https://www.abs.gov.au/websitedbs/D3310114.nsf/Home/2016%20QuickStats> (accessed 30 September 2019)

Migration streams

From 1 January to 31 December 2017, 704 migrants settled in the Northern NSW district (see Table 5).

The largest number of migrants to the Northern NSW District settled in Tweed (n=224), and most were family migrants (n=138) followed by skilled migrants (n=86).

Table 5. Migration Stream in Northern NSW, by LGA, between 1 January and 31 December 2017

| LGA | Migration Stream | | | Total |
|------------------------|------------------|--------------|---------------|---------------|
| | Family | Humanitarian | Skilled | |
| Ballina | 67 | 0 | 41 | 108 |
| Byron | 136 | 0 | 46 | 182 |
| Clarence Valley | 46 | 0 | 31 | 77 |
| Kyogle | 15 | 0 | 0 | 15 |
| Lismore | 54 | 0 | 16 | 70 |
| Richmond Valley | 15 | 0 | 13 | 28 |
| Tweed | 138 | 0 | 86 | 224 |
| Northern NSW | 471 | 0 | 233 | 704 |
| New South Wales | 27,200 | 6,514 | 47,002 | 80,794 |

Source: Department of Social Services, Settlement Data Reports January 2017 to 31 December 2017: <https://www.data.gov.au/dataset/ds-dga-8d1b90a9-a4d7-4b10-ad6a-8273722c8628/details> (accessed 25 September 2019).

Children and Young People

Government schools

The following tables provide information about the government schools in the four LGAs that make up the Mid-North Coast district. These tables provide information on the following factors:

| | |
|------------------------------|--|
| No. of FTE enrolments | The number of full-time equivalent (FTE) enrolments indicates the number of students who attended the school over the course of the academic year. For example, 39.2 means 39 students were enrolled full time for one academic year and one student was enrolled for a fifth of the year. |
| % of ATSI | The percentage of FTE students enrolled who identify as Aboriginal and/or Torres Strait Islander. |
| % of LBOTE | The percentage of students (headcount) who have a language background other than English (LBOTE). A student has a LBOTE if they, or their parents or guardians, speak a language other than English at home. |
| ISCEA value | <p>The Index of Community Socio-Education Advantage (ICSEA) provides information about the socio-educational backgrounds of a school's students. This is worked out by looking at the parents' occupation and education, a school's geographical location, and the proportion of Indigenous students.</p> <p>The ICSEA is set at an average of 1000. The lower the ICSEA level, the lower the educational advantage of students who go to this school. The highest score of a public school in New South Wales is 1245, and the lowest score is 543.</p> |
| % School attendance | The attendance rate is the number of actual FTE student days attended by full-time students in Years 1-10 in Semester One as a percentage of the total number of possible student-days attended in semester one. |

There are 140 schools in the Northern NSW district (6a-6g):

- 15 in the Ballina LGA
- 15 in the Byron LGA
- 26 in the Clarence Valley LGA
- 14 in the Kyogle LGA
- 29 in the Lismore LGA
- 11 in the Richmond Valley LGA
- 30 in the Tweed LGA

Kingscliff High School in Tweed is the largest government school in Northern NSW district (996.8 FTE enrolments) and the smallest in Afterlee Public School in Kyogle (9 FTE enrolments).

The school with the highest Indigenous population is Cabbage Tree Island Public School in the Ballina LGA (100% Indigenous), and the school with the highest LBOTE population is Tabulam Public School in the Kyogle LGA (70%).

The government school in Northern NSW with the highest ISCEA is Bangalow Public School in the Byron LGA (1093), and the school with the lowest is Southern Cross School of Distance Education (548) followed by Cabbage Tree Island Public School (637).

The school with the lowest school attendance is Tyalgum Public School in the Tweed LGA, and the school with the highest school attendance is Cowper Public School in the Clarence Valley LGA (97.6).

Table 6a. Profile of government schools in the Ballina LGA

| Government school | No. of FTE enrolments | % of ATSI | % of LBOTE | ISCEA value | % School attendance |
|---|-----------------------|-----------|------------|-------------|---------------------|
| Alstonville High School | 735.9 | 5 | 8 | 1021 | 91.2 |
| Alstonville Public School | 483 | 7 | 8 | 1012 | 93 |
| Ballina Coast High School | 796.6 | 15 | 7 | 949 | 86.9 |
| Ballina Public School | 256 | 39 | 7 | 836 | 89.6 |
| Cabbage Tree Island Public School | 25 | 100 | 0 | 637 | 84.6 |
| Empire Vale Public School | 30 | np | np | 940 | 95.9 |
| Fernleigh Public School | 23 | np | np | 1023 | 93.8 |
| Lennox Head Public School | 418 | 2 | 14 | 1055 | 92 |
| Newrybar Public School | 35 | 0 | np | 1059 | 91.8 |
| Rous Public School | 77 | 10 | np | 1019 | 94.6 |
| Southern Cross Public School | 377 | 13 | 8 | 988 | 92.8 |
| Southern Cross School of Distance Education | 602 | 31 | 3 | 548 | 93.1 |
| Teven-Tintenbar Public School | 159 | np | 9 | 1039 | 90.9 |
| Wardell Public School | 36 | np | np | 934 | 92.8 |
| Wollongbar Public School | 310 | 7 | 4 | 1012 | 93.6 |

Table 6b. Profile of government schools in the Byron LGA

| Government school | No. of FTE enrolments | % of ATSI | % of LBOTE | ISCEA value | % School attendance |
|-----------------------------------|-----------------------|-----------|------------|-------------|---------------------|
| Bangalow Public School | 293 | 2 | 9 | 1093 | 93.3 |
| Brunswick Heads Public School | 200 | 12 | 12 | 997 | 92.4 |
| Byron Bay High School | 815.2 | 5 | 14 | 1043 | 88.5 |
| Byron Bay Public School | 641 | 2 | 18 | 1064 | 91.4 |
| Coorabell Public School | 126 | np | 23 | 1091 | 94.2 |
| Durrumbul Public School | 29 | np | np | 1019 | 93.5 |
| Eureka Public School | 34 | 0 | 16 | 1089 | 92.4 |
| Goonengerry Public School | 37 | np | 22 | 1006 | 91.1 |
| Main Arm Upper Public School | 109 | np | 30 | 1017 | 91.9 |
| Mullumbimby High School | 622.3 | 7 | 10 | 1010 | 86.3 |
| Mullumbimby Public School | 205 | 3 | 13 | 1021 | 92.6 |
| Ocean Shores Public School | 337 | 4 | 16 | 1042 | 90.7 |
| The Pocket Public School | 59 | np | 18 | 1027 | 90.4 |
| Upper Coopers Creek Public School | 10 | 0 | np | 1050 | 95.2 |
| Wilsons Creek Public School | 32 | np | 25 | 958 | 94.2 |

Table 6c. Profile of government schools in the Clarence Valley LGA

| Government school | No. of FTE enrolments | % of ATSI | % of LBOTE | ISCEA value | % School attendance |
|---------------------------------|-----------------------|-----------|------------|-------------|---------------------|
| Baryulgil Public School | 10 | 80 | 43 | 720 | 86 |
| Chatsworth Island Public School | 48 | np | np | 1012 | 90.2 |
| Copmanhurst Public School | 66 | 11 | np | 877 | 92.3 |
| Coutts Crossing Public School | 70 | 16 | np | 910 | 91.8 |
| Cowper Public School | 35 | 20 | np | 937 | 97.6 |
| Dundurrabin Public School | 24 | 0 | np | 957 | 90.5 |
| Gillwinga Public School | 133 | 57 | 5 | 779 | 87.3 |
| Glenreagh Public School | 62 | 23 | np | 864 | 94.7 |
| Grafton High School | 904.4 | 15 | 4 | 936 | 85.6 |
| Grafton Public School | 670 | 20 | 5 | 929 | 92.4 |
| Gulmarrad Public School | 187 | 11 | 10 | 968 | 93.2 |
| Harwood Island Public School | 54 | 13 | 0 | 932 | 93.6 |
| Hernani Public School | 12 | np | 0 | 796 | Sp |
| Iluka Public School | 108 | 10 | np | 944 | 91.7 |
| Lawrence Public School | 68 | 12 | 12 | 933 | 94 |
| Maclean High School | 847.2 | 11 | 2 | 957 | 86.4 |
| Maclean Public School | 153 | 20 | 4 | 933 | 92.2 |
| Nymboida Public School | 19 | np | 0 | 983 | 92.7 |
| Palmers Island Public School | 47 | 15 | np | 964 | 91.1 |
| South Grafton High School | 518.5 | 21 | 3 | 897 | 88 |
| South Grafton Public School | 595 | 22 | 3 | 901 | 93.7 |
| Tucabia Public School | 36 | 17 | np | 870 | 91 |
| Ulmarra Public School | 66 | 12 | np | 941 | 89.6 |
| Westlawn Public School | 516 | 12 | 2 | 959 | 94.5 |
| Wooli Public School | 58 | np | np | 961 | 90.5 |
| Yamba Public School | 342 | 16 | 5 | 969 | 93.5 |

Table 6d. Profile of government schools in the Kyogle LGA

| Government school | No. of FTE enrolments | % of ATSI | % of LBOTE | ISCEA value | % School attendance |
|------------------------------|-----------------------|-----------|------------|-------------|---------------------|
| Afterlee Public School | 9 | 0 | 0 | 899 | 93 |
| Barkers Vale Public School | 48 | np | 24 | 970 | 87 |
| Bonalbo Central School | 131 | 31 | np | 849 | 82.3 |
| Collins Creek Public School | 11 | 0 | np | 994 | 92.4 |
| Doubtful Creek Public School | 13 | np | 0 | 886 | 89.1 |
| Kyogle High School | 329.8 | 8 | 4 | 942 | 88.7 |
| Kyogle Public School | 320 | 14 | 3 | 929 | 92.9 |
| Mummulgum Public School | 22 | np | 0 | 869 | 92.5 |
| Old Bonalbo Public School | 17 | np | 0 | 824 | 91.2 |
| Rukenvale Public School | 11 | 0 | np | 964 | 92.4 |
| Tabulam Public School | 32 | 78 | 70 | 668 | 89.3 |
| The Risk Public School | 32 | np | np | 985 | 95.4 |
| Wiangaree Public School | 15 | np | 0 | 880 | 90.9 |
| Woodenbong Central School | 185.4 | 30 | np | 904 | 89.6 |

Table 6e. Profile of government schools in the Lismore LGA

| Government school | No. of FTE enrolments | % of ATSI | % of LBOTE | ISCEA value | % School attendance |
|---------------------------|-----------------------|-----------|------------|-------------|---------------------|
| Albert Park Public School | 89 | 26 | np | 913 | 87 |
| Bexhill Public School | 99 | 6 | 12 | 1065 | 90.8 |
| Blakebrook Public School | 76 | 9 | np | 958 | 93.3 |
| Caniaba Public School | 57 | np | np | 983 | 92 |
| Clunes Public School | 82 | 7 | np | 1041 | 92.2 |
| Coffee Camp Public School | 52 | 21 | 21 | 929 | 85 |
| Corndale Public School | 22 | np | 0 | 1004 | 95.3 |
| Dunoon Public School | 87 | 0 | 14 | 1041 | 91 |

Table 6e. Profile of government schools in the Lismore LGA (continued)

| Government school | No. of FTE enrolments | % of ATSI | % of LBOTE | ISCEA value | % School attendance |
|--|-----------------------|-----------|------------|-------------|---------------------|
| Eltham Public School | 52 | 0 | np | 1071 | 94 |
| Goolmangar Public School | 18 | np | np | 976 | 91.4 |
| Goonellabah Public School | 284 | 47 | 7 | 835 | 88.3 |
| Jiggi Public School | 33 | 18 | np | 1007 | 94.6 |
| Larnook Public School | 30 | np | np | 1008 | 90.2 |
| Lismore Heights Public School | 231 | 28 | 9 | 936 | 91.3 |
| Lismore Public School | 291 | 18 | 11 | 938 | 91.9 |
| Lismore South Public School | 244 | 17 | 4 | 896 | 90.9 |
| Modanville Public School | 86 | np | np | 1030 | 92.5 |
| Nimbin Central School | 242 | 20 | 14 | 950 | 81.5 |
| Rosebank Public School | 38 | np | np | 1064 | 95.6 |
| The Channon Public School | 35 | np | np | 1039 | 88.2 |
| The Rivers Secondary College, Kadina High Campus | 441.5 | 16 | 5 | 952 | 83.8 |
| The Rivers Secondary College, Lismore High Campus | 407 | 17 | 6 | 926 | 83.6 |
| The Rivers Secondary College, Richmond River High Campus | 721 | 8 | 6 | 966 | 85.8 |
| Tregeagle Public School | 117 | 8 | 7 | 1022 | 94 |
| Tuntable Creek Public School | 10 | np | np | 995 | 92 |
| Whian Whian Public School | 17 | 0 | np | 963 | 93 |
| Wilson Park School | 65 | 29 | np | 913 | 84.4 |
| Wyrallah Public School | 24 | np | np | 966 | 95.1 |
| Wyrallah Road Public School | 517 | 11 | 10 | 984 | 92.8 |

Table 6f. Profile of government schools in the Tweed LGA

| Government school | No. of FTE enrolments | % of ATSI | % of LBOTE | ISCEA value | % School attendance |
|---------------------------------|-----------------------|-----------|------------|-------------|---------------------|
| Banora Point High School | 596.6 | 12 | 7 | 957 | 86.9 |
| Banora Point Public School | 607 | 11 | 7 | 994 | 93.9 |
| Bilambil Public School | 324 | 7 | 7 | 989 | 95 |
| Bogangar Public School | 281 | 10 | 8 | 1006 | 93.5 |
| Burringbar Public School | 57 | 12 | np | 970 | 94.2 |
| Carool Public School | 17 | np | np | 962 | 93.5 |
| Centaur Public School | 506 | 16 | 10 | 946 | 92.2 |
| Chillingham Public School | 31 | np | 0 | 940 | 92.9 |
| Condong Public School | 45 | 0 | np | 943 | 94.4 |
| Crabbes Creek Public School | 42 | np | 16 | 1020 | 89.6 |
| Crystal Creek Public School | 81 | np | np | 967 | 90 |
| Cudgen Public School | 190 | 18 | 7 | 977 | 92.9 |
| Dungay Public School | 73 | 10 | 0 | 971 | 94.4 |
| Duranbah Public School | 52 | np | np | 1014 | 91.9 |
| Fingal Head Public School | 40 | 48 | np | 887 | 88.6 |
| Kingscliff High School | 996.8 | 12 | 7 | 979 | 87.5 |
| Kingscliff Public School | 609 | 9 | 9 | 1042 | 93.1 |
| Murwillumbah East Public School | 260 | 12 | 10 | 956 | 85.5 |
| Murwillumbah High School | 439.8 | 9 | 6 | 952 | 92.6 |
| Murwillumbah Public School | 293 | 13 | 9 | 954 | |
| Pottsville Beach Public School | 663 | 5 | 6 | 1018 | 93.3 |
| Stokers Siding Public School | 17 | np | 26 | 924 | 89.8 |
| Terranora Public School | 446 | 4 | 8 | 1031 | 94 |
| Tumbulgum Public School | 32 | np | 0 | 903 | 94.5 |
| Tweed Heads Public School | 277 | 20 | 16 | 933 | 92.3 |

Table 6f. Profile of government schools in the Tweed LGA (continued)

| Government school | No. of FTE enrolments | % of ATSI | % of LBOTE | ISCEA value | % School attendance |
|---------------------------------|-----------------------|-----------|------------|-------------|---------------------|
| Tweed Heads South Public School | 196 | 34 | 13 | 872 | 91 |
| Tweed River High School | 720.6 | 17 | 7 | 942 | 87.8 |
| Tyalgum Public School | 45 | 16 | np | 911 | 81.8 |
| Uki Public School | 160 | 9 | 9 | 953 | 91 |
| Wollumbin High School | 441.8 | 6 | 8 | 970 | 88.6 |

Table 6g. Profile of government schools in the Richmond Valley LGA

| Government school | No. of FTE enrolments | % of ATSI | % of LBOTE | ISCEA value | % School attendance |
|------------------------------|-----------------------|-----------|------------|-------------|---------------------|
| Broadwater Public School | 51 | 12 | np | 985 | 92.5 |
| Casino High School | 630 | 26 | 3 | 866 | 86.5 |
| Casino Public School | 707 | 22 | 4 | 882 | 93 |
| Casino West Public School | 254 | 44 | 4 | 787 | 89.4 |
| Coraki Public School | 70 | 41 | 0 | 740 | 84.4 |
| Evans River Community School | 486 | 17 | 3 | 933 | 89.2 |
| Leeville Public School | 59 | np | np | 945 | 90.8 |
| Manifold Public School | 39 | 21 | 0 | 971 | 93.9 |
| Rappville Public School | 13 | np | np | 943 | 88.4 |
| Stratheden Public School | 27 | np | 0 | 921 | 91.3 |
| Woodburn Public School | 140 | 17 | np | 920 | 92.8 |

Source: NSW Centre for Education Statistics and Evaluation, Master dataset: NSW government school locations and student enrolment numbers (2017) <https://data.cese.nsw.gov.au/data/dataset/nsw-public-schools-master-dataset> (accessed 7 October 2019). Student attendance rate by individual government schools (2011-2017): <https://data.cese.nsw.gov.au/data/dataset/student-attendance-rate-by-school> (accessed 7 October 2019).

The Department of Education also provides information about suspensions and expulsions from government schools at the district level .

Table 7 shows that the Northern NSW district has a higher proportion of students who received short suspensions (four days or less) in 2018 compared to the NSW state average. In 2018, 6.2% of students received short suspensions in Northern NSW, compared to 4.0% in NSW.

The proportion of students who received long suspensions (4-20 school days) was also above the NSW state average; 2.4% in the district compared to 1.5% in the state.

In the Northern NSW district, 6 students were expelled for misbehaviour in 2018, which is 3.4% of the total expulsions for misbehaviour in the state.

Table 7. Suspensions and expulsions from government schools in Northern NSW district, 2018

| | Northern NSW | New South Wales |
|---|-----------------|-----------------|
| Total short suspensions ¹ | 3,196 | 52,755 |
| Total number of students short suspended | 1,880 | 32,343 |
| Students short suspended as % of enrolment | 6.2% | 4.0% |
| Total long suspensions | 1,054 | 17,235 |
| Total number students long suspended ² | 743 | 12,355 |
| Students long suspended as % of enrolment | 2.4% | 1.5% |
| Students expelled for misbehaviour | 6 | 175 |
| Expulsion for unsatisfactory participation | <5 ³ | 122 |

Source: NSW Centre for Education Statistics and Evaluation, Suspensions and Expulsions in NSW government schools (2015-2018): <https://data.cese.nsw.gov.au/data/dataset/suspensions-and-expulsions-in-nsw-government-schools> (accessed 9 October 2019)

- ¹ includes students on short suspension (four days or less) on more than one occasion
² includes students on long suspension (four to 20 school days) on more than one occasion
³ In order to protect individual students' identities, values 5 and under are represented as <5

Early childhood development

The Australian Early Development Census (AEDC) measures the early childhood development of children in Australia in their first year of full-time school. It measures this across five domains that predict later health, education and social outcomes:

- physical health and wellbeing
- social competence
- emotional maturity
- language and cognitive skills (school-based)
- communication skills and general knowledge

MORE INFORMATION

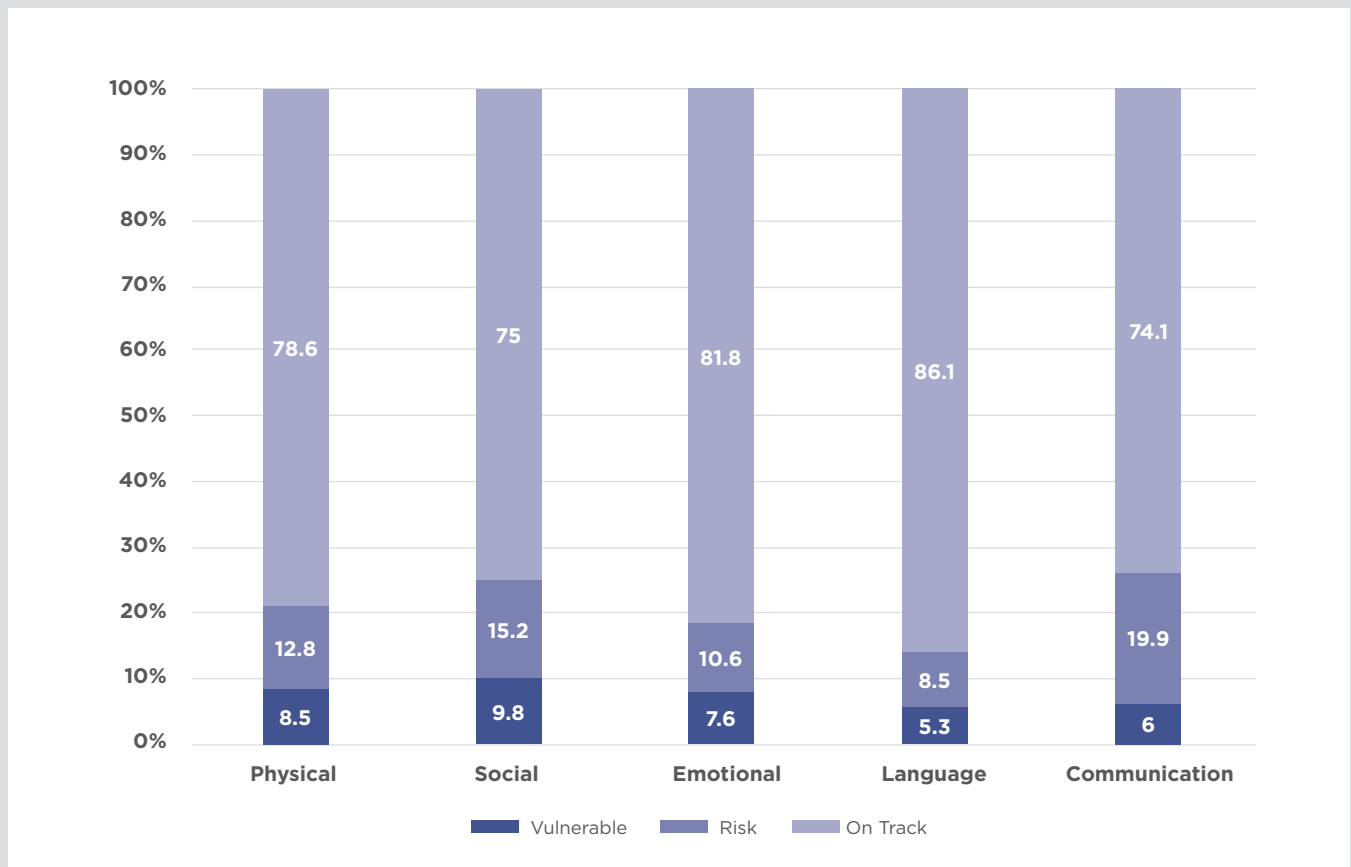
More information about the AEDC domains can be found in the [About the AEDC Domains](#) fact sheet.

The AEDC results can tell us if children are developmentally on track or if they need more support through their school years.

In the 2018 AEDC, the majority of children in the Northern NSW district were developmentally on track (see Figures 2-8). In all seven LGAs, more than 55% of children were developmentally on track for each of the AEDC domains

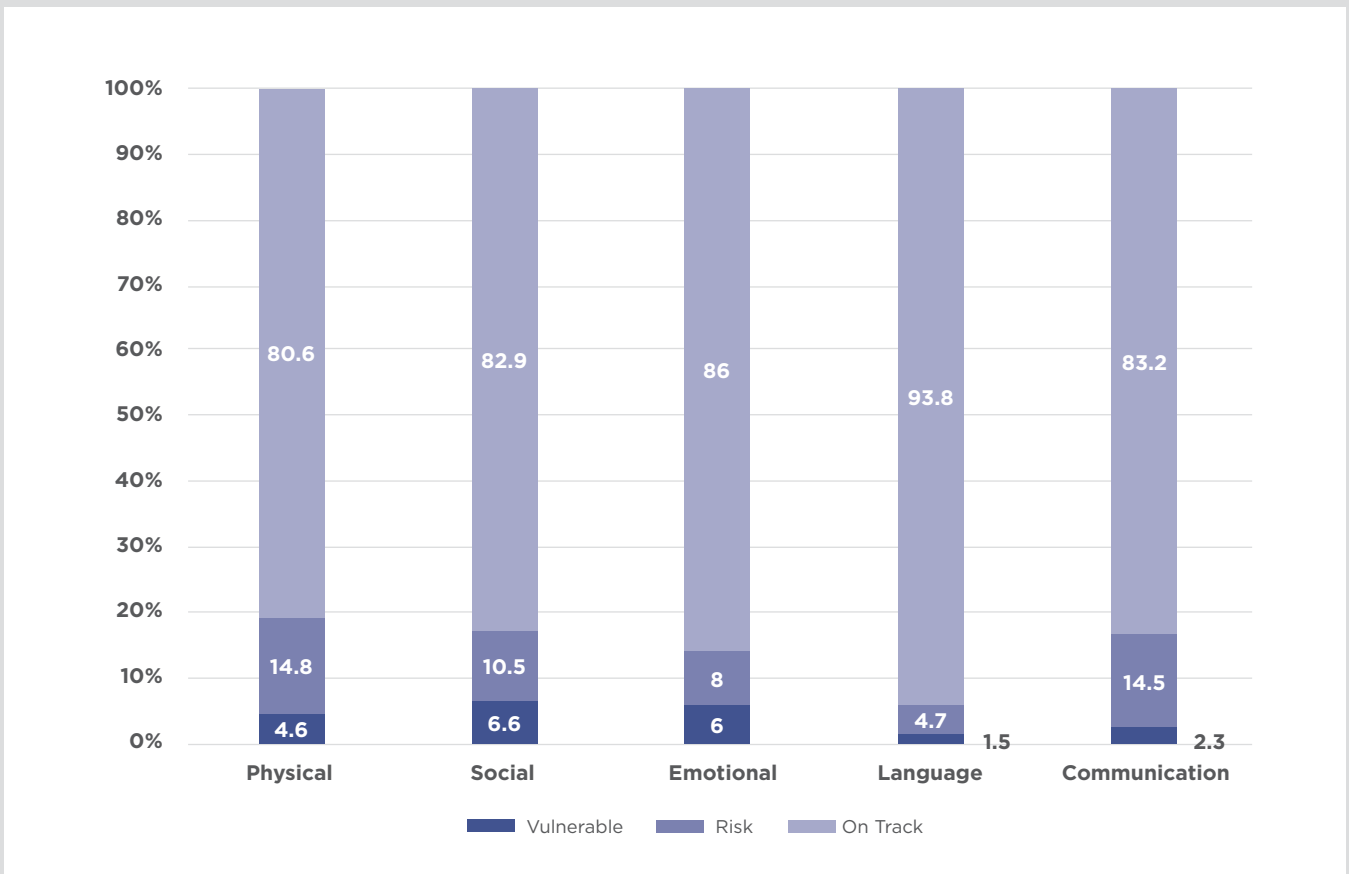
The proportion of children developmentally at risk and vulnerable was greater in the Tweed and Richmond Valley LGAs, compared to the other LGAs.

Figure 2. 2018 AEDC results for Ballina LGA



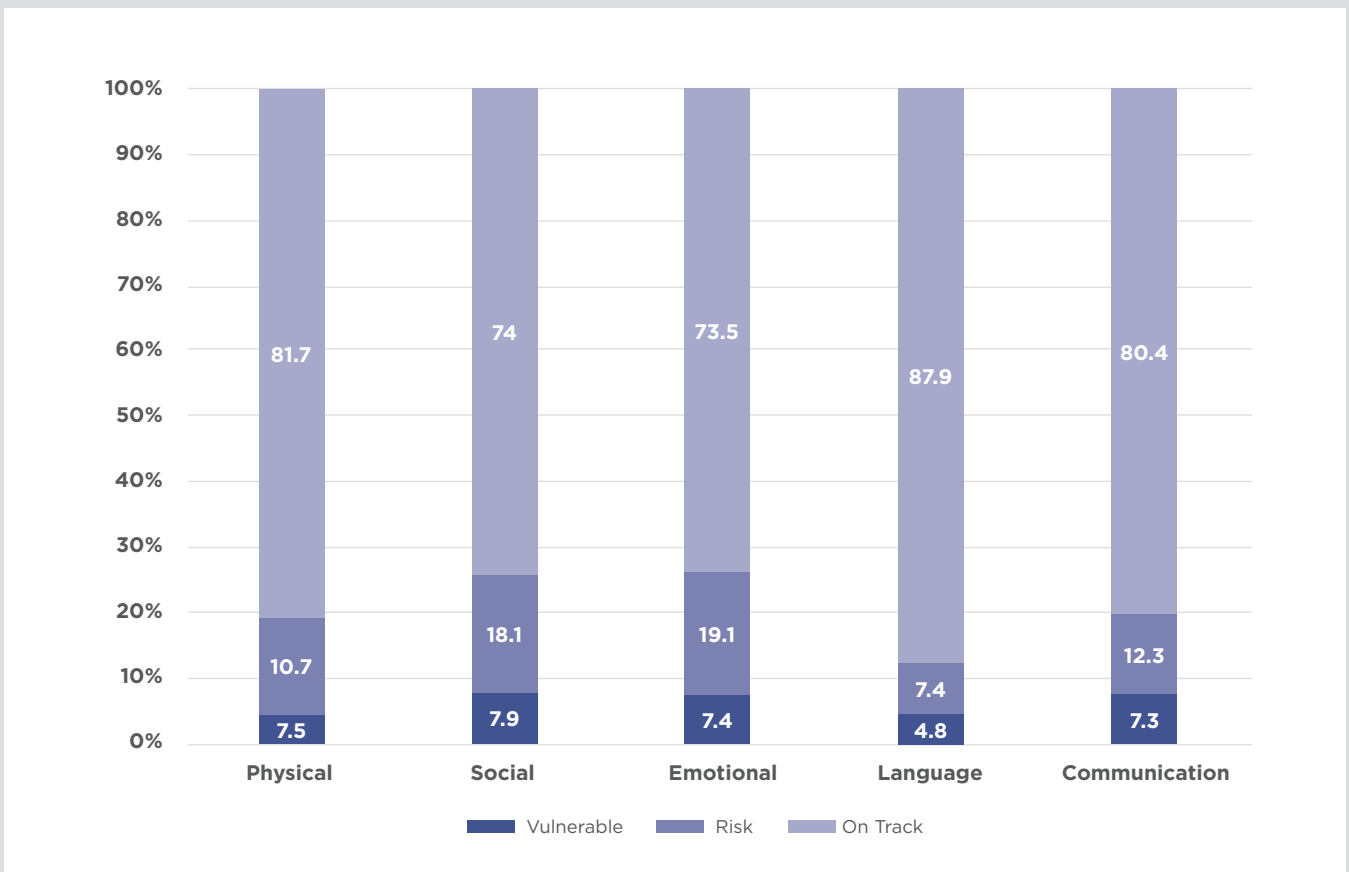
Source: Source: AEDC Data Explorer: <https://www.aedc.gov.au/data/data-explorer> (accessed 26 September 2019)

Figure 3. 2018 AEDC results for Byron LGA



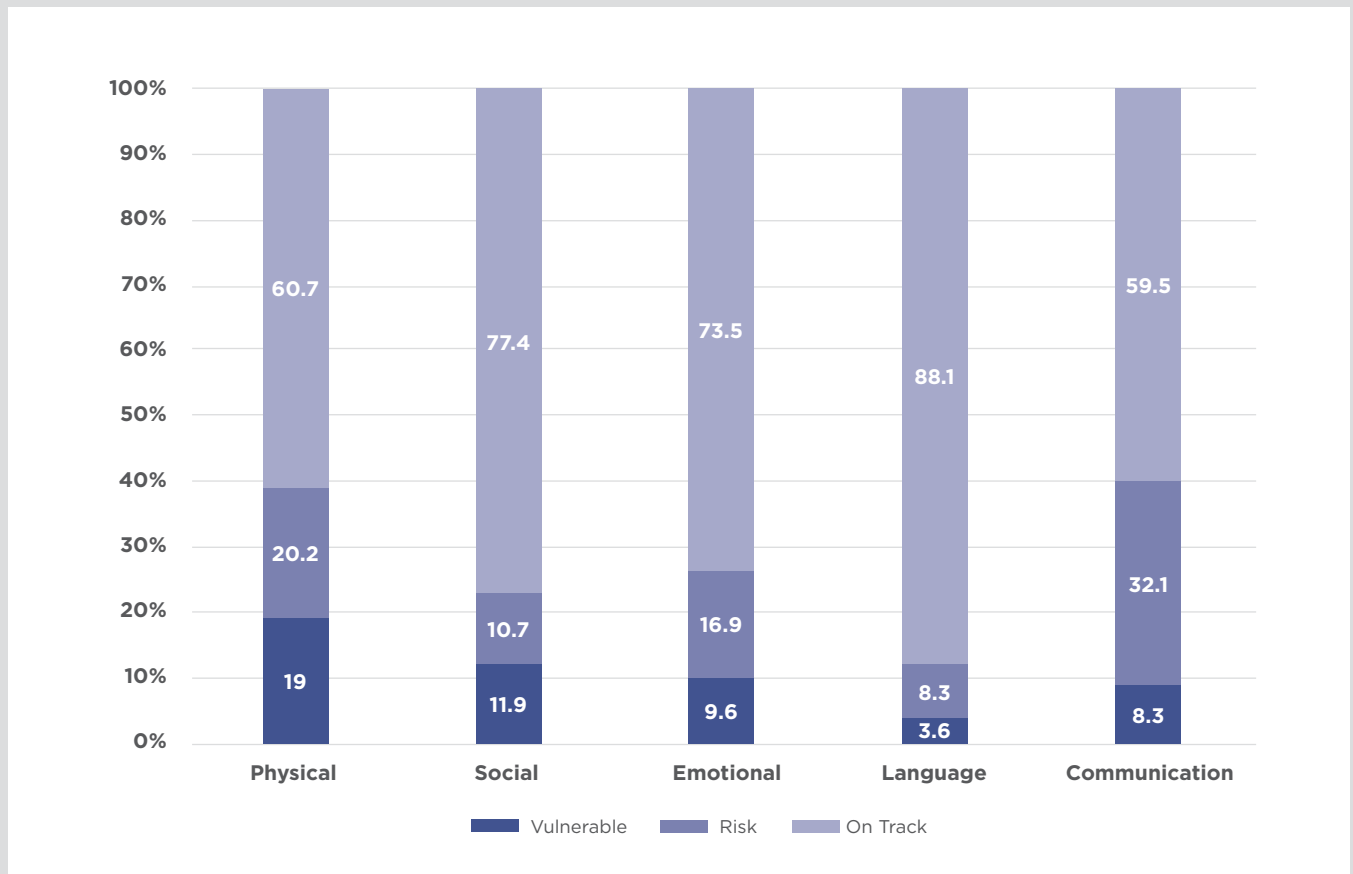
Source: AEDC Data Explorer: <https://www.aedc.gov.au/data/data-explorer> (accessed 26 September 2019)

Figure 4. 2018 AEDC results for Clarence Valley LGA



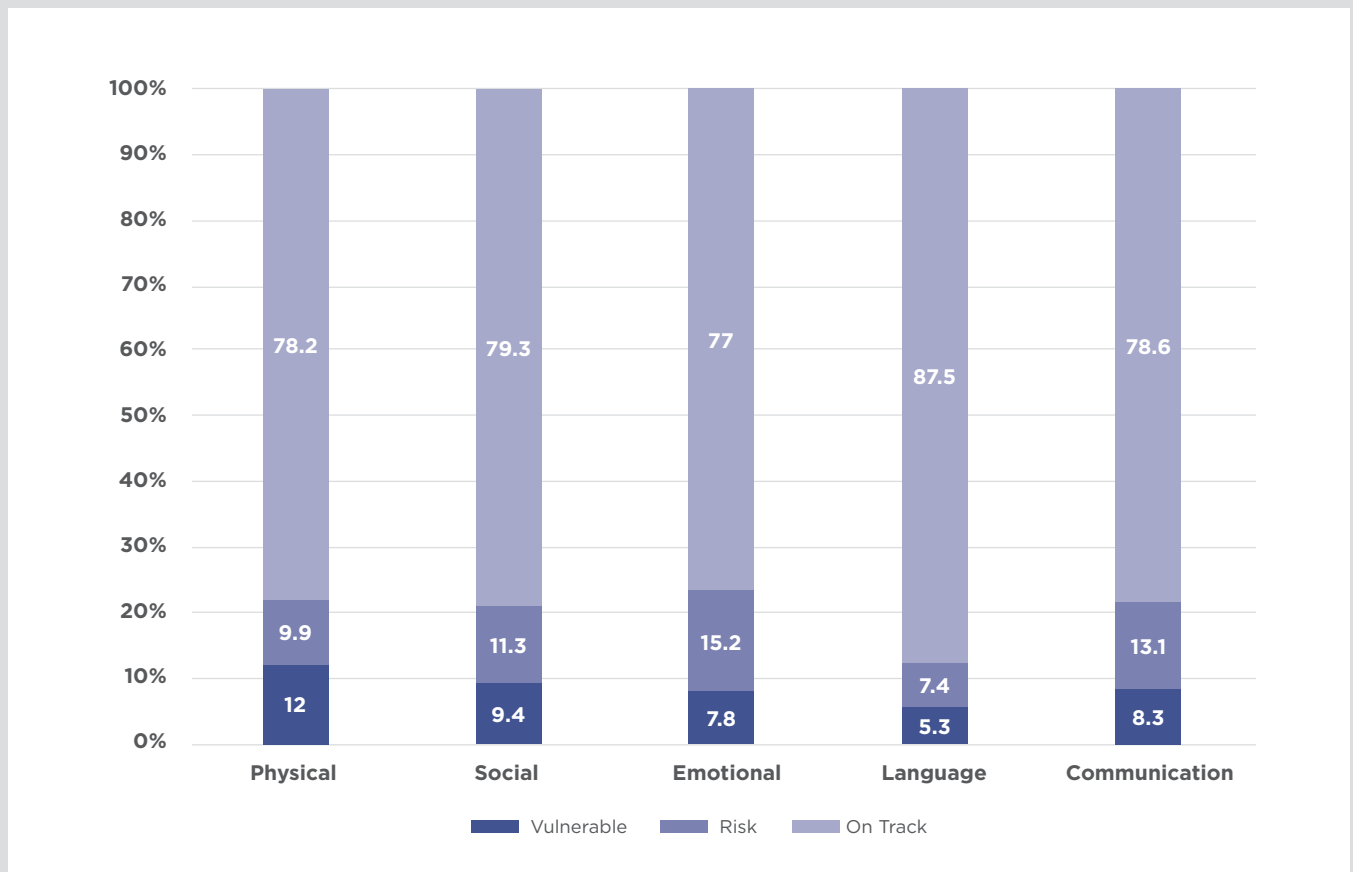
Source: AEDC Data Explorer: <https://www.aedc.gov.au/data/data-explorer> (accessed 26 September 2019)

Figure 5. 2018 AEDC results for Kyogle LGA



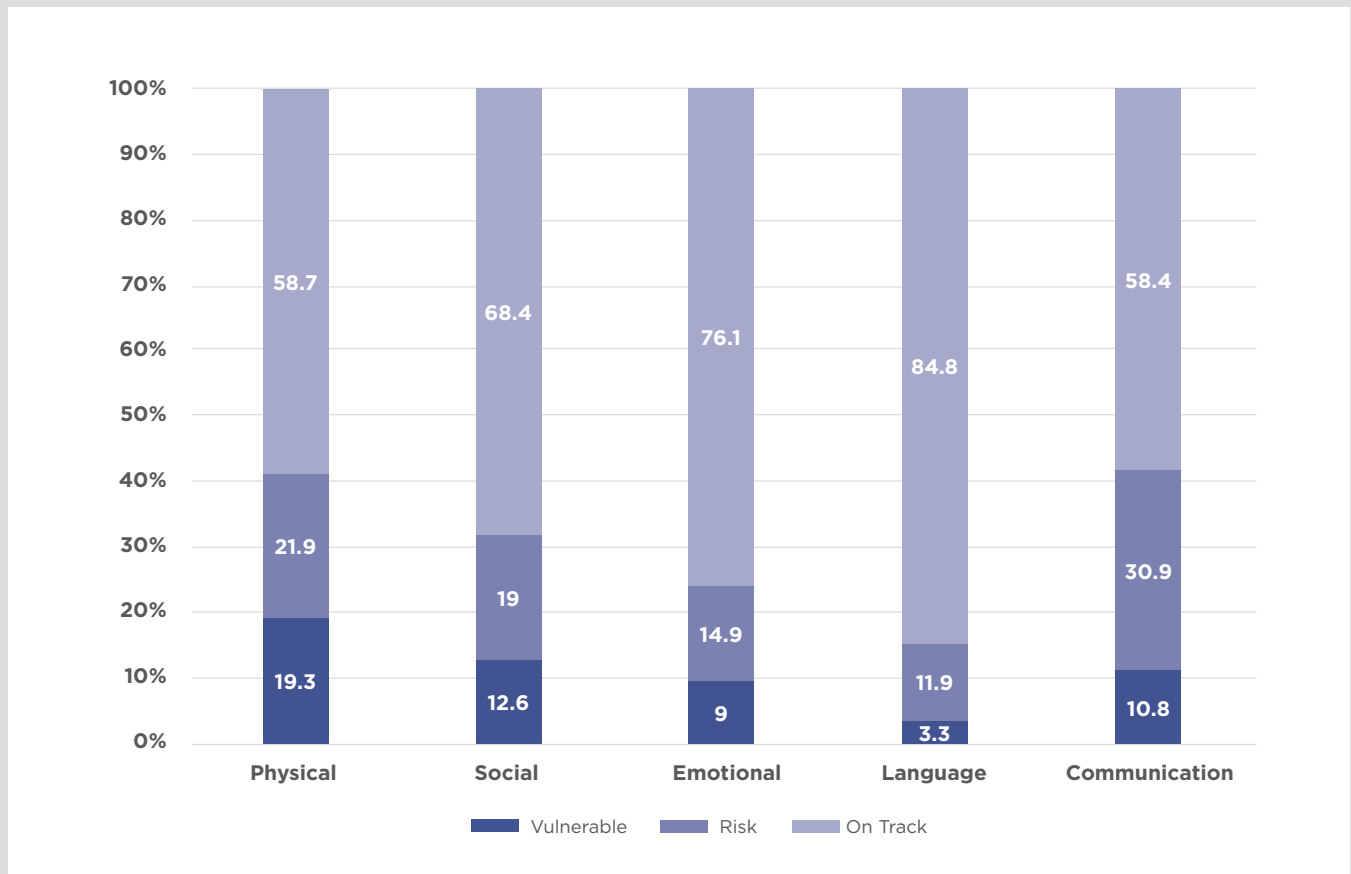
Source: AEDC Data Explorer: <https://www.aedc.gov.au/data/data-explorer> (accessed 26 September 2019)

Figure 6. 2018 AEDC results for Lismore LGA



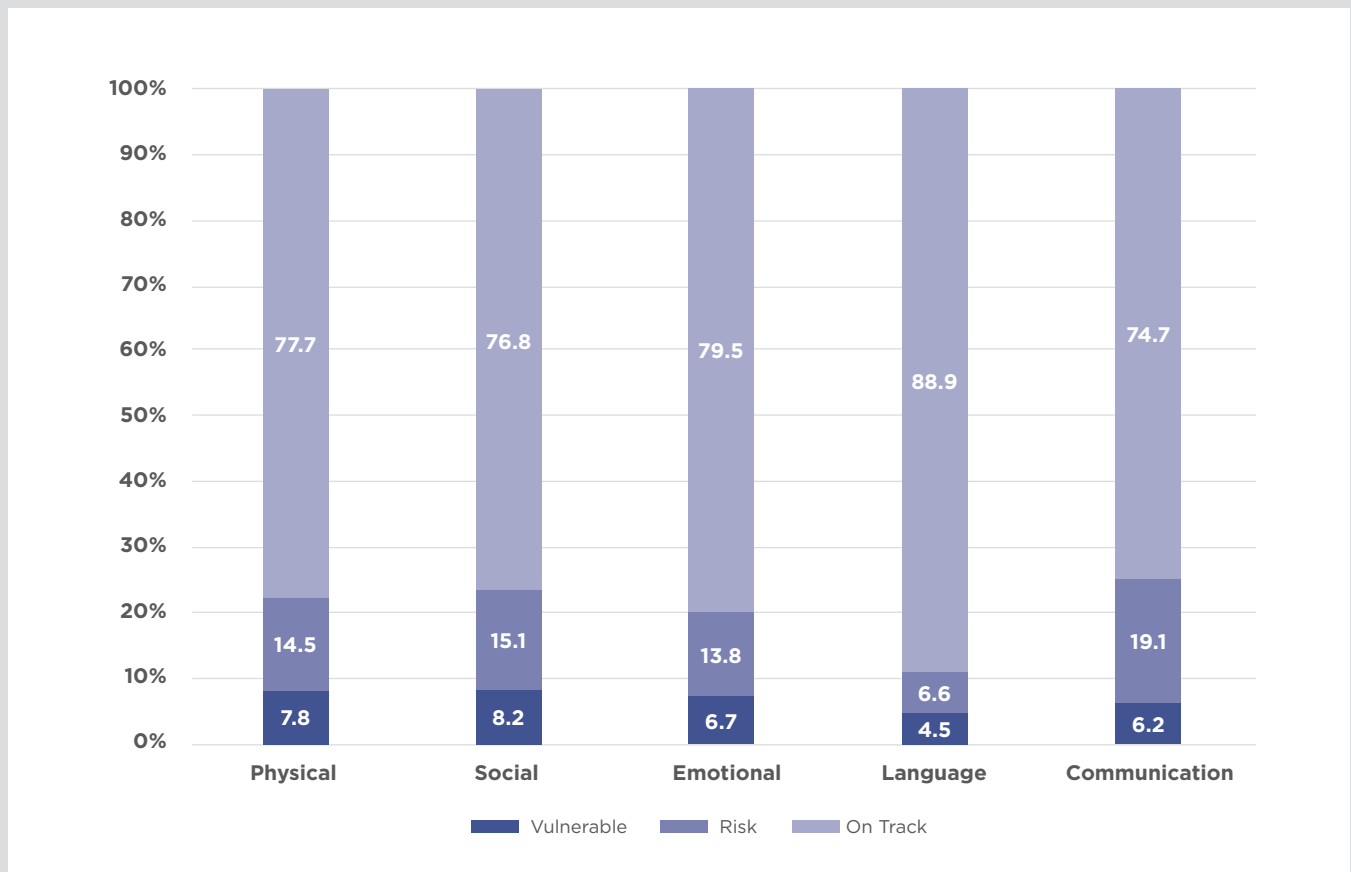
Source: AEDC Data Explorer: <https://www.aedc.gov.au/data/data-explorer> (accessed 26 September 2019)

Figure 7. 2018 AEDC results for Richmond Valley LGA



Source: AEDC Data Explorer: <https://www.aedc.gov.au/data/data-explorer> (accessed 26 September 2019)

Figure 8. 2018 AEDC results for Tweed LGA



Source: AEDC Data Explorer: <https://www.aedc.gov.au/data/data-explorer> (accessed 26 September 2019)

The AEDC also has two summary indicators that measure developmental vulnerability across all five domains.

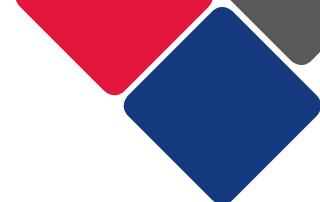
In the Northern NSW district, 8.8% of children were developmentally vulnerable on two or more AEDC domains (see Table 8). Richmond Valley and Kyogle had the highest proportion of children developmentally vulnerable on two or more domains, 14.6% and 13.3% respectively.

Only 5.2% of children in Byron were developmentally vulnerable on two or more domains.

Table 8. Percentage of children developmentally vulnerable in Northern NSW district, by LGA, 2018

| | Developmentally vulnerable on 1 or more domain | | Developmentally vulnerable on two or more domains | | Total no. of children measured |
|---------------------|--|-------------|---|------------|--------------------------------|
| | No. | % | No. | % | |
| Ballina | 84 | 18.2 | 49 | 10.5 | 489 |
| Byron | 47 | 13.7 | 18 | 5.2 | 364 |
| Clarence Valley | 92 | 18.3 | 42 | 8.3 | 533 |
| Kyogle | 24 | 28.6 | 11 | 13.3 | 98 |
| Lismore | 89 | 20.5 | 47 | 10.8 | 460 |
| Richmond Valley | 77 | 28.6 | 39 | 14.6 | 295 |
| Tweed | 176 | 18 | 82 | 8.4 | 1,039 |
| Northern NSW | 589 | 18.0 | 288 | 8.8 | 3,278 |
| NSW | 18,583 | 19.9 | 9,001 | 9.6 | 97,731 |

Source: AEDC Data Explorer: <https://www.aedc.gov.au/data/data-explorer> (accessed 26 September 2019)



Vulnerable children and young people

Using the Their Futures Matter (TFM) Human Services Dataset, TFM identified three vulnerable groups of children and young people in NSW:

| | |
|---|---|
| <p>Young children aged 0-5</p> | <p>Children aged 5 or younger at 30 June 2017 with one or more of the following:</p> <ul style="list-style-type: none"> • 1 or more parental risk factors • 2 or more perinatal risk factors • Assessment as at ROSH |
| <p>Children aged under 15 and affected by mental illness</p> | <p>Children under 15 years at 30 June 2017 with one or more the following:</p> <ul style="list-style-type: none"> • Use of NSW mental health services (hospital or ambulatory) • Parental use of NSW mental health services (hospital or ambulatory) |
| <p>Children and young people aged 15-18 and affected by mental illness</p> | <p>Children and young people between 15-18 years at 30 June 2017 with one or more of the following:</p> <ul style="list-style-type: none"> • Use of NSW mental health services (hospital or ambulatory) • Parental use of NSW mental health services (hospital or ambulatory) |

For each vulnerable group, TFM identified five indicators associated with poor outcomes later in life. They also identified the proportion of this group with this indicator. TFM identified these indicators by undertaking predictive modelling and analysis, using the TFM Human Services Data set. This dataset brings together data collected by ten different government agencies. It includes data on child protection, housing, justice, health, education and commonwealth service use.

Table 9 shows the top five indicators for each vulnerable group in the Northern NSW district.



Table 9. Indicators of vulnerable children and young people in the Northern NSW district

| Vulnerable group | Indicator | % of group with indicator |
|---|---|---------------------------|
| Young children aged 0-5 | Parents have interacted with justice system | 40 |
| | Mother smoked during pregnancy | 37 |
| | Child had concern report | 37 |
| | Mother aged 21 and under at childbirth | 25 |
| | Parents have been in social housing | 9 |
| Children aged under 15 and affected by mental illness | Child had a concern report | 50 |
| | Mother smoked during pregnancy | 40 |
| | Parents have interacted with justice system | 35 |
| | Mother aged 21 and under at childbirth | 25 |
| | Parents have been in social housing | 14 |
| Children and young people aged 15-18 and affected by mental illness | NAPLAN Year 7 band less than 6 | 54 |
| | Had concern report in the last three years | 37 |
| | Hospital admission in the last three years | 37 |
| | Family have been in social housing | 18 |
| | Has appeared in court | 7 |

Source: Their Futures Matter, FACS District Data pack, Northern NSW district

Table 10 shows the number and proportion of children in each of the vulnerable groups by LGA. It also shows us what proportion of this group identifies as Aboriginal.

For example, in Richmond, 1,507 children were under the age of 5. Of these children, 44% (n=663) were identified as vulnerable and 37% of these vulnerable children identified as Aboriginal. By comparison, in Byron, 18% of children under the age of 5 were vulnerable and 12% of these vulnerable children identified as Aboriginal.

When looking at children under the age of 15, 20% were affected by mental illness in Richmond Valley and 18% in Lismore, compared to only 8% in Byron

When looking at children and young people between the ages of 15 and 18, 22% were affected by mental illness in Clarence Valley, compared to only 21% in Byron.

Table 10. Vulnerable groups of children and young people in the Northern NSW district, by LGA

| | | Ballina | Byron | Clarence Valley | Kyogle | Lismore | Richmond Valley | Tweed |
|---|--|---------|-------|-----------------|--------|---------|-----------------|-------|
| Young children aged 0-5 | No. of C/YP aged under 5 | 1,873 | 1,486 | 2,664 | 444 | 2,464 | 1,510 | 4,180 |
| | No. of <i>vulnerable</i> C/YP aged under 5 | 495 | 268 | 1,013 | 161 | 821 | 665 | 1,060 |
| | % of <i>vulnerable</i> C/YP aged under 5 | 27% | 18% | 38% | 36% | 33% | 44% | 25% |
| | % who identify as Aboriginal | 25% | 12% | 36% | 39% | 33% | 37% | 24% |
| Children aged under 15 and affected by mental illness | No. of C/YP aged under 15 | 3,961 | 2,939 | 5,991 | 999 | 5,375 | 3,141 | 8,068 |
| | No. of C/YP aged under 15 affected by mental illness | 445 | 232 | 825 | 123 | 952 | 616 | 818 |
| | % of C/YP aged under 15 affected by mental illness | 11% | 8% | 14% | 12% | 18% | 20% | 10% |
| | % of identify as Aboriginal | 22% | 12% | 30% | 39% | 28% | 34% | 27% |
| Children and young people aged 15-18 and affected by mental illness | No. of C/YP aged 15-18 | 1,542 | 1,089 | 2,117 | 374 | 1,858 | 1,123 | 2,632 |
| | No. of C/YP aged 15-18 affected by mental illness | 258 | 130 | 469 | 66 | 357 | 224 | 407 |
| | % of C/YP aged 15-18 affected by mental illness | 17% | 12% | 22% | 18% | 19% | 20% | 15% |
| | % of identify as Aboriginal | 17% | 10% | 27% | 26% | 20% | 23% | 17% |

Source: Their Futures Matter, FACS District Data pack, Northern NSW district

Contact with child protection services

In 2016-17, 1.5% (n=949) of children and young people aged 18 and under were in out-of-home care in the Northern NSW district (see Table 11). The majority of these children and young people were in the Clarence Valley (n=280) and Lismore (n=176) LGAs.

In 2016-17, 7.3% (n=4,625) of children and young people aged 18 and over were found to be at risk of significant harm. The majority of these children were in the Tweed (n=1,068) and Clarence Valley (n=1,020) LGAs.

Table 11. Child Protection Overview in the Northern NSW District, by LGA, 2016-17

| | Total number of children and young people reported | | Total number of children and young people at risk of significant harm | | Total number of children and young people in out-of-home care, as of 30 June 2017 | | Total number of CYP 18 and under |
|---------------------|--|-------------|---|------------|---|------------|----------------------------------|
| | No. | % | No. | % | No. | % | No. |
| Ballina | 719 | 8.0 | 532 | 5.9 | 125 | 1.4 | 8,950 |
| Byron | 335 | 5.0 | 224 | 3.4 | 31 | 0.5 | 6,661 |
| Clarence Valley | 1,365 | 12.6 | 1,020 | 9.4 | 280 | 2.6 | 10,808 |
| Kyogle | 280 | 14.1 | 183 | 9.2 | 35 | 1.8 | 1,984 |
| Lismore | 1,193 | 11.9 | 923 | 9.2 | 176 | 1.8 | 10,021 |
| Richmond Valley | 880 | 15.7 | 675 | 12.0 | 146 | 2.6 | 5,610 |
| Tweed | 1,479 | 7.6 | 1,068 | 5.5 | 156 | 0.8 | 19,497 |
| Northern NSW | 6,251 | 9.8 | 4,625 | 7.3 | 949 | 1.5 | 63,531 |
| NSW | 230,343 | 13.2 | 168,819 | 9.7 | 36,304 | 2.1 | 1,742,488 |

Source: FACS Datacube, accessed 27 September 2019



Economic Environment

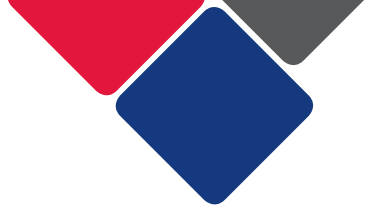
Education

In the Northern NSW District, 15.3% (n=35,616) of people aged 15 and under reported completing a Bachelor degree level and above as their highest level of educational attainment. 11.7% (n=27,377) of people aged 15 and under reported completing Year 12 and 19.7% (n=28,236) had completed a Certificate III or IV (see Table 12).

Table 12. Level of highest educational attainment in Northern NSW district, by LGA (people aged 15 years and over)

| Highest level of educational attainment | Ballina | | Byron | | Clarence Valley | | Kyogle | | Lismore | | Richmond Valley | | Tweed | | Northern NSW | | NSW |
|---|---------|------|-------|------|-----------------|------|--------|------|---------|------|-----------------|------|--------|------|--------------|-------|------|
| | No. | % | No. | % | No. | % | No. | % | No. | % | No. | % | No. | % | No. | % | No. |
| Bachelor Degree level and above | 6,546 | 18.8 | 6,224 | 23.7 | 4,208 | 9.9 | 822 | 11.0 | 6,219 | 17.5 | 1,383 | 7.5 | 10,214 | 13.4 | 35,616 | 15.3 | 23.4 |
| Advanced Diploma and Diploma level | 3,324 | 9.5 | 2,787 | 10.6 | 3,011 | 7.1 | 546 | 7.3 | 2,885 | 8.1 | 1,092 | 5.9 | 6,727 | 8.8 | 20,372 | 8.7 | 8.9 |
| Certificate level IV | 1,140 | 3.3 | 743 | 2.8 | 1,538 | 3.6 | 187 | 2.5 | 1,306 | 3.7 | 639 | 3.5 | 2,311 | 3.0 | 7,864 | 3.4 | 2.8 |
| Certificate level III | 5,237 | 15 | 3,357 | 12.8 | 7,134 | 16.8 | 1,150 | 15.4 | 5,437 | 15.3 | 3,082 | 16.7 | 12,557 | 16.5 | 37,954 | 16.3 | 12.0 |
| Year 12 | 3,721 | 10.7 | 3,275 | 12.5 | 4,151 | 9.8 | 774 | 10.3 | 4,166 | 11.8 | 1,875 | 10.2 | 9,415 | 12.4 | 27,377 | 11.7 | 15.3 |
| Year 11 | 1,249 | 3.6 | 916 | 3.5 | 1,627 | 3.8 | 324 | 4.3 | 1,326 | 3.7 | 753 | 4.1 | 3,107 | 4.1 | 9,302 | 4.0 | 3.3 |
| Year 10 | 4,923 | 14.1 | 2,492 | 9.5 | 7,703 | 18.2 | 1,395 | 18.6 | 5,213 | 14.7 | 3,632 | 19.7 | 12,001 | 15.8 | 37,359 | 16.0 | 11.5 |
| Certificate level II | 39 | 0.1 | 14 | 0.1 | 75 | 0.2 | 10 | 0.1 | 37 | 0.1 | 32 | 0.2 | 78 | 0.1 | 285 | 0.01 | 0.1 |
| Certificate level I | 4 | 0 | 0 | 0 | 8 | 0 | 0 | 0 | 4 | 0 | 3 | 0 | 6 | 0 | 25 | 0.001 | 0.0 |
| Year 9 or below | 3,227 | 9.3 | 1,351 | 5.1 | 5,401 | 12.7 | 974 | 13 | 3,344 | 9.4 | 2,822 | 15.3 | 7,277 | 9.6 | 24,396 | 10.5 | 8.4 |
| No education attainment | 73 | 0.2 | 42 | 0.2 | 109 | 0.3 | 21 | 0.3 | 81 | 0.2 | 49 | 0.3 | 164 | 0.2 | 539 | 0.02 | 0.9 |
| Not stated | 4,117 | 11.8 | 4,261 | 16.2 | 5,940 | 14 | 1,053 | 14.1 | 4,269 | 12 | 2,569 | 13.9 | 9,716 | 12.8 | 31,925 | 13.7 | 10.3 |

Source: ABS Quickstats, 2016 Census: <https://www.abs.gov.au/websitedbs/D3310114.nsf/Home/2016%20QuickStats> (accessed 25 September 2019)



Employment

There were 123,006 people who reported being in the labour force in the week before Census night in the Northern NSW district (see Table 13). Of these, 48.9% were employed full time, 38.4% were employed part-time and 7.3% were unemployed. The proportion of people who were unemployed was highest in Clarence Valley LGA (9%) and lowest in Byron (6.5%).

Table 13. Employment in Northern NSW district, by LGA

| | Ballina | | Byron | | Clarence Valley | | Kyogle | | Lismore | | Richmond Valley | | Tweed | | Northern NSW | | NSW |
|------------------|---------------|-------------|---------------|-------------|-----------------|-------------|--------------|-------------|---------------|-------------|-----------------|------------|---------------|-------------|----------------|------------|------------|
| | No | % | No | % | No | % | No | % | No | % | No | % | No | % | No | % | % |
| Worked full-time | 9,382 | 50.6 | 6,120 | 42.2 | 9,432 | 48.9 | 1,773 | 49.9 | 9,896 | 50.2 | 4,519 | 50.5 | 18,991 | 49.4 | 60,113 | 48.9 | 59.2 |
| Worked part-time | 7,140 | 38.5 | 6,602 | 45.5 | 6,992 | 36.2 | 1,263 | 35.6 | 7,331 | 37.2 | 3,216 | 35.9 | 14,694 | 38.2 | 47,238 | 38.4 | 29.7 |
| Away from work | 939 | 5.1 | 839 | 5.8 | 1,134 | 5.9 | 205 | 5.8 | 937 | 4.8 | 527 | 6.4 | 2,045 | 5.3 | 6,626 | 5.4 | 4.8 |
| Unemployed | 1,086 | 5.9 | 945 | 6.5 | 1,740 | 9.0 | 310 | 8.7 | 1,534 | 7.8 | 694 | 5.9 | 2,720 | 7.1 | 9,029 | 7.3 | 6.3 |
| Total | 18,547 | 44.4 | 14,506 | 45.9 | 19,298 | 38.1 | 3,551 | 39.7 | 19,698 | 45.7 | 8,956 | 7.7 | 38,450 | 42.1 | 123,006 | 100 | 100 |

Source: ABS Quickstats, 2016 Census: <https://www.abs.gov.au/websitedbs/D3310114.nsf/Home/2016%20QuickStats> (accessed 25 September 2019)

Income

The median weekly personal income for people aged 15 years and over in the Northern NSW district was \$530, which is less than the NSW average of \$664 (see Table 14).

Table 14. Median weekly income in Northern NSW district, by LGA (people aged 15 years and over)

| | Personal | Family | Household |
|---------------------|--------------|----------------|----------------|
| Ballina | \$601 | \$1,426 | \$1,156 |
| Byron | \$596 | \$1,389 | \$1,149 |
| Clarence Valley | \$477 | \$1,133 | \$910 |
| Kyogle | \$460 | \$1,076 | \$832 |
| Lismore | \$550 | \$1,351 | \$1,067 |
| Richmond Valley | \$491 | \$1,191 | \$953 |
| Tweed | \$539 | \$1,332 | \$1,064 |
| Northern NSW | \$530 | \$1,271 | \$1,018 |
| NSW | \$664 | \$1,780 | \$1,486 |

Source: ABS Quickstats, 2016 Census: <https://www.abs.gov.au/websitedbs/D3310114.nsf/Home/2016%20QuickStats> (accessed 25 September 2019)

All LGAs in the Northern NSW district have a higher proportion of low-income households compared to the NSW state average (see Table 15). In Kyogle, 35.2% of households earned less than \$650 a week. This is much higher than the NSW state average of 19.7%.

Table 15. Household income in Northern NSW district, by LGA

| | % of households with less than \$650 gross weekly income | % of households with more than \$3000 gross weekly income |
|-----------------|--|---|
| Ballina | 23.6 | 9.7 |
| Byron | 25.8 | 10.0 |
| Clarence Valley | 30.6 | 5.2 |
| Kyogle | 35.2 | 4.5 |
| Lismore | 27.5 | 6.9 |
| Richmond Valley | 29.3 | 4.4 |
| Tweed | 26.9 | 7.7 |
| NSW | 19.7 | 18.7 |

Source: ABS Quickstats, 2016 Census: <https://www.abs.gov.au/websitedbs/D3310114.nsf/Home/2016%20QuickStats> (accessed 30 September 2019)

Socio-economic advantage and disadvantage

The Socio-Economic Indexes for Areas (SEIFA) is a measure used to rank areas in Australia according to socio-economic advantage and disadvantage. It is based on information from the five-yearly Census of Population and Housing.

The information presented below is based on the Index of Relative Socio-economic Advantage and Disadvantage (IRSAD). The IRSAD summarises information about the economic and social conditions of people and households within an area.

In the Northern NSW district, out of the seven LGAs, Byron has the highest SEIFA score (1003) and is ranked the highest (98) (see Table 16). This means Byron is relatively advantaged compared to the other LGAs in the Northern NSW district.

Conversely, out of the seven LGAs, Richmond Valley has the lowest SEIFA score (885) and is ranked the lowest (6). This means Richmond Valley is relatively disadvantaged compared to the other LGAs in the Northern NSW district.

Table 16. LGA Index of Relative Socio-economic Advantage and Disadvantage in Northern NSW

| | Score ¹ | NSW Rank ² | NSW Decile ³ |
|-----------------|--------------------|-----------------------|-------------------------|
| Ballina | 987 | 92 | 8 |
| Byron | 1003 | 98 | 8 |
| Clarence Valley | 908 | 16 | 2 |
| Kyogle | 905 | 13 | 1 |
| Lismore | 942 | 45 | 4 |
| Richmond Valley | 885 | 6 | 1 |
| Tweed | 956 | 65 | 5 |

Source: ABS, Socio-Economic Indexes for Areas (SEIFA), 2016, 2033.0.55.001, accessed 1 October 2019, <https://www.abs.gov.au/AUSSTATS/abs@.nsf/DetailsPage/2033.0.55.0012016?OpenDocument>

- ¹ **Score:** A low IRSAD score indicates that an area is relatively disadvantaged compared to an area with a higher score.
- ² **Rank:** All areas are ranked from the lowest to the highest score. The area with the lowest score is ranked number one, the area with the highest score is ranked 129. The State Rank can only be used to compare areas with a single state/territory.
- ³ **Decile:** All areas are ordered from the lowest to highest score, the lowest 10% of areas are given a decile number of 1 and so on, up to the highest 10% of areas which are given a number of 10. This means that areas are divided into 10 groups, depending on their score. Decile 1 is the most disadvantaged relative to other deciles.

Social Environment

Community safety and crime

In the Northern NSW district, 1,152 domestic violence-related assaults and 1,736 non-domestic violence-related assaults occurred between January and December 2018.

Domestic violence-related assault was most likely to occur in the Kyogle LGA, with a rate of 590.3 per 100,000 population (see Table 17).

Non-domestic violence-related assault was most likely to occur in Byron, with a rate of 653.2 assaults per 100,000 population.

Table 17. Incidents of crime recorded by the NSW Police Force in the Northern NSW district, by LGA, January-December 2018

| | Domestic violence-related assault | | | Non-domestic violence-related assault | | |
|-----------------|-----------------------------------|-----------------------------|--------------------------|---------------------------------------|-----------------------------|-------------|
| | No. | Rate per 100,000 population | Rank in NSW ¹ | No. | Rate per 100,000 population | Rank in NSW |
| Ballina | 112 | 257.7 | 89 | 158 | 363.6 | 60 |
| Byron | 108 | 317.8 | 76 | 222 | 653.2 | 12 |
| Clarence Valley | 214 | 415.0 | 55 | 248 | 480.9 | 42 |
| Kyogle | 53 | 590.3 | 30 | 47 | 523.4 | 34 |
| Lismore | 218 | 496.5 | 47 | 280 | 637.7 | 14 |
| Richmond Valley | 124 | 531.8 | 40 | 127 | 544.7 | 32 |
| Tweed | 323 | 340.5 | 70 | 274 | 288.9 | 81 |

Source: Bureau of Crime Statistics and Research, NSW Local Government Area Excel crime table: https://www.bocsar.nsw.gov.au/Pages/bocsar_crime_stats/bocsar_lgaexceltables.aspx (accessed 26 September 2019)

¹ Ranked by rate of domestic and non-domestic violence per 100,000 population, from 1-129 (where number 129 equals the lowest rate, and number one equals the highest).

The most common drug offence in the Northern NSW district is cannabis use and/or possession (see Table 18). In 2018, the highest rate of cannabis use and/or possession offences was in the Byron LGA (1,303.4 offences per 100,000 population) followed by the Lismore LGA (831.3 offences per 100,000 population). The second most common drug offence during this period was ecstasy use, which was also highest in Byron (467.8 offences per 100,000 population). The highest rate of amphetamine possession/use was in Tweed LGA (163.4 offences per 100,000).

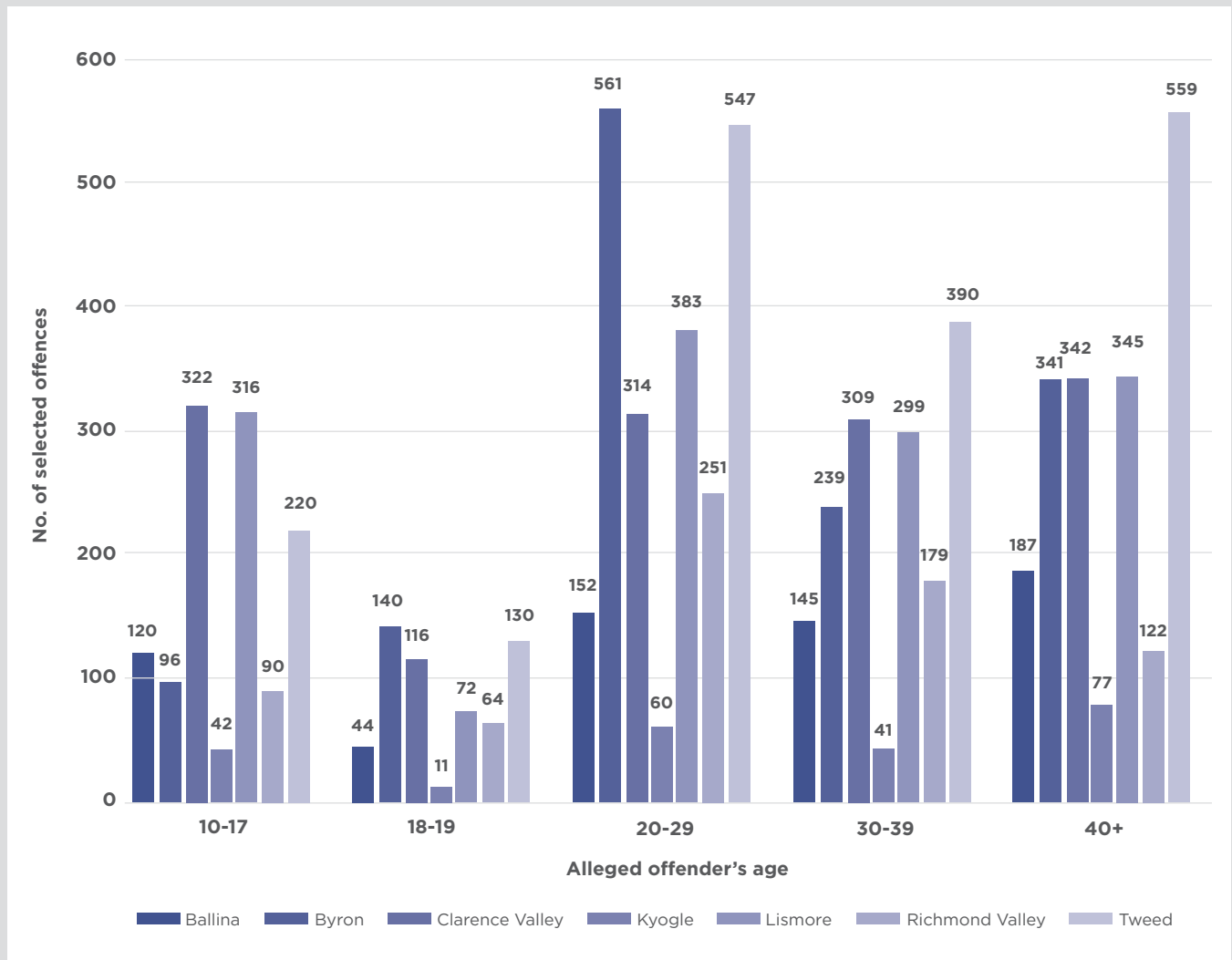
Table 18. Recorded drug offences (possession and/or use) in Northern NSW district, Jan-Dec 2018, by LGA

| | Ballina | | Byron | | Clarence Valley | | Kyogle | | Lismore | | Richmond Valley | | Tweed | |
|--------------|---------|------------------|-------|------------------|-----------------|------------------|--------|------------------|---------|------------------|-----------------|------------------|-------|------------------|
| | No. | Rate per 100,000 | No. | Rate per 100,000 | No. | Rate per 100,000 | No. | Rate per 100,000 | No. | Rate per 100,000 | No. | Rate per 100,000 | No. | Rate per 100,000 |
| Cocaine | 0 | 0.0 | 45 | 132.4 | 7 | 13.6 | 0 | 0.0 | 3 | 6.8 | 2 | 8.6 | 17 | 17.9 |
| Narcotics | 3 | 6.9 | 4 | 11.8 | 2 | 3.9 | 0 | 0.0 | 13 | 29.6 | 0 | 0.0 | 6 | 6.3 |
| Cannabis | 78 | 179.5 | 443 | 1,303.4 | 206 | 399.5 | 32 | 356.4 | 365 | 831.3 | 135 | 579.0 | 401 | 422.7 |
| Ampheta-mine | 14 | 32.2 | 31 | 91.2 | 47 | 91.1 | 7 | 78.0 | 57 | 129.8 | 27 | 115.8 | 155 | 163.4 |
| Ecstasy | 4 | 9.2 | 159 | 467.8 | 2 | 3.9 | 0 | 0.0 | 10 | 22.8 | 21 | 90.1 | 21 | 22.1 |
| Other drugs | 11 | 25.3 | 87 | 256.0 | 18 | 34.9 | 4 | 44.5 | 57 | 129.8 | 32 | 137.2 | 87 | 91.7 |

Source: NSW Local Government Area excel crime tables, BOCSAR: https://www.bocsar.nsw.gov.au/Pages/bocsar_crime_stats/bocsar_lgaexceltables.aspx (accessed 10 October 2019)

When looking at the age of alleged offenders in Northern NSW, 20-29 year old's were most likely to offend. This was followed by 40 and above year old's and 30-39-year old's (see Figure 9). This was common across Byron, Lismore, and Tweed LGAs. Ballina and Clarence Valley LGAs had a higher rate of 40 and above offenders than 20-29-year old offenders.

Figure 9. Age of alleged offenders proceeded against by NSW Police for incidents of selected offences¹, 2018²



Source: Bureau of Crime Statistics and Research, NSW Local Government Area Excel crime table: https://www.bocsar.nsw.gov.au/Pages/bocsar_crime_stats/bocsar_lgaexceltables.aspx (accessed 26 September 2019)

¹ For the full list of selected offences please see the original source

² The year the alleged offenders were proceeded against, rather than the year the incident was recorded.

Maternal Health

Teenage pregnancy

Teenage parenthood is associated with a number of adversities, including low socioeconomic status, educational under-achievement and drugs abuse. In turn, young parenthood can act to further entrench some of these problems and perpetuate a cycle of disadvantage.

In 2017, 73 mothers aged 19 and under gave birth in the Northern NSW district (see Table 19). This accounts for almost 2.8% of all births. The highest rate of young mothers was in Richmond Valley (7.7%). The lowest rate of young mothers was in Byron (0.6%).

Table 19. Young mothers who gave birth¹ in Northern NSW district, by LGA, 2017

| LGA | No. of mothers 19 and under | % of mothers giving birth aged 19 and under | Total no. of births |
|---------------------|-----------------------------|---|---------------------|
| Ballina | 7 | 2.1 | 334 |
| Byron | 2 | 0.6 | 335 |
| Clarence Valley | 24 | 4.9 | 493 |
| Kyogle | 1 | 1.7 | 85 |
| Lismore | 6 | 1.5 | 394 |
| Richmond Valley | 16 | 7.7 | 214 |
| Tweed | 17 | 2.3 | 742 |
| Northern NSW | 73 | 2.8 | 2,597 |
| NSW | 1,792 | 1.9 | 94,145 |

Source: Healthstats NSW: http://www.healthstats.nsw.gov.au/Indicator/mab_mbth_age/mab_mbth_age_lgamap (accessed 1 October 2019)

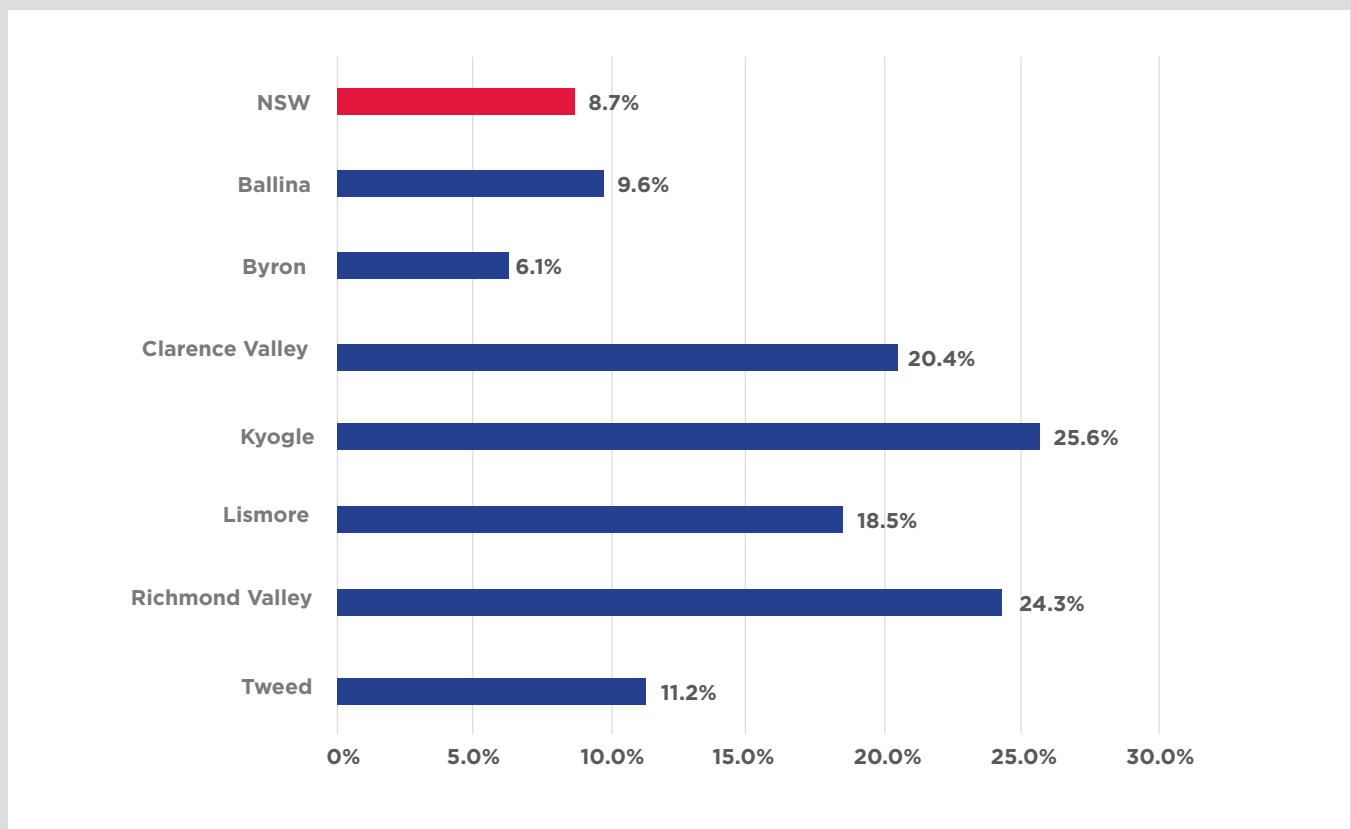
¹ Number of mothers who gave birth (stillbirth or live birth) in NSW, regardless of place of permanent residence.

Smoking during pregnancy

Smoking during pregnancy is an important modifiable risk factor for low birth weight, pre-term birth, placental complications and perinatal mortality.

Between 2015-2017, an average of 16.5% of mothers in the Northern NSW district smoked during their pregnancy (see Figure 10). Mothers in the Kyogle LGA were more likely to smoke during their pregnancy (25.6%) compared to mothers in Byron (6.1%).

Figure 10. Proportion of mothers in the Northern NSW district who smoked during pregnancy, 2015-2017



Source: Healthstats NSW: http://www.healthstats.nsw.gov.au/Indicator/mab_smo_cat/mab_smo_cat_lga_trend (accessed 26 September 2019)

Australian Mothers Index

Since 2000, Save the Children has produced a Mother's Index showing where mothers do best and where they face the greatest hardships. This index compares countries worldwide, as well as Australian states and territories and LGAs.

The information in Table 20 is derived from the Local-level Mothers Index. Five indicators make up this index:

- maternal health - the proportion of pregnant women with at least one antenatal visit in the first trimester
- children's wellbeing - the proportion of children under 5 developmentally on track (measured by the AEDC)
- educational status - the proportion of women completing Year 12 or above
- economic status - average household income
- relative socioeconomic disadvantage - a measure of a mother's access to material and social resources and her ability to participate in society.

These indicators were used to rank every LGA in NSW, where 1 is the best rank and 152 is the worst.

Ballina performed the best out of the seven LGAs in the Northern NSW district, receiving a rank of 49 out of 152 (see Table 20). Richmond Valley received the lowest rank of the seven LGAs, at 144 out of 152. This means that mothers in Richmond Valley are facing much greater hardships than mothers in Ballina.

Table 20. Mothers Index Ranking in the Northern NSW District, by LGA

| LGA | NSW Ranking |
|-----------------|-------------|
| Ballina | 49 |
| Byron | 60 |
| Clarence Valley | 128 |
| Kyogle | 131 |
| Lismore | 103 |
| Richmond Valley | 144 |
| Tweed | 69 |

Source: Harris, J and Wells, M, 2016, *State of Australia's Mothers*, Save the Children, Sydney, <https://apo.org.au/sites/default/files/resource-files/2016/05/apo-nid63692-1201431.pdf> (accessed 26 September 2019)

Disability

Need for assistance with core activities

In the Northern NSW district, 6.8% of the population need help or assistance with core activities (see Table 21). This amounts to 19,840 people. In the Clarence Valley LGA, 8.4% of people need help or assistance with core activities. This was the highest proportion of all seven LGAs. In the Byron LGA, 4.4% of people need help or assistance with core activities. This was the smallest proportion of all seven LGAs.

Table 21. Need for assistance with core activities¹ in New England district, by LGA

| | Has need for assistance | | Does not have need for assistance | | Need for assistance not stated | | Total |
|---------------------|-------------------------|------------|-----------------------------------|-------------|--------------------------------|------------|------------------|
| | No. | % | No. | % | No. | % | |
| Ballina | 2,518 | 6.0 | 36,003 | 86.2 | 3,267 | 7.8 | 41,790 |
| Byron | 1,384 | 4.4 | 25,993 | 82.4 | 4,179 | 13.2 | 31,556 |
| Clarence Valley | 4,242 | 8.4 | 42,152 | 83.2 | 4,274 | 8.4 | 50,671 |
| Kyogle | 651 | 7.3 | 7,404 | 82.3 | 882 | 9.9 | 8,940 |
| Lismore | 2,747 | 6.4 | 36,774 | 85.2 | 3,617 | 8.4 | 43,135 |
| Richmond Valley | 1,779 | 7.8 | 19,108 | 83.8 | 1,918 | 8.4 | 22,807 |
| Tweed | 6,519 | 7.1 | 77,823 | 85.2 | 7,026 | 7.7 | 91,371 |
| Northern NSW | 19,840 | 6.8 | 245,257 | 84.5 | 25,163 | 8.7 | 290,260 |
| NSW | 402,048 | 5.4 | 6,558,727 | 87.7 | 519,452 | 6.9 | 7,480,228 |

Source: ABS, 2016 Census Community Profiles: <https://www.abs.gov.au/websitedbs/D3310114.nsf/Home/2016%20Census%20Community%20Profiles> (accessed 2 October 2019)

¹ A person's need for help or assistance in one or more of the three core activity areas of self-care, mobility, and communication, because of a disability, long-term health condition (lasting six months or more) or old age.

Households and Social Housing

Households

The average number of people per household in Northern NSW district is 2.3, slightly less than the NSW state average.

In Northern NSW, 74,033 (66.9%) of households were composed of families (see Table 22). Ballina had the highest percentage of family households (68.2%), followed by Clarence Valley and Richmond Valley (67.7%). Single-person households made up 28.9%, while group households made up 4.1%.

Table 22. Household Composition in Northern NSW, by LGA

| LGA | Single-person households | | Group households | | Family households | | Total | Average people per household |
|---------------------|--------------------------|-------------|------------------|------------|-------------------|-------------|----------------|------------------------------|
| | No. | % | No. | % | No. | % | | No. |
| Ballina | 4,594 | 28.3 | 555 | 3.4 | 11,067 | 68.2 | 16,216 | 2.3 |
| Byron | 3,132 | 27.6 | 896 | 7.9 | 7,338 | 64.6 | 11,366 | 2.4 |
| Clarence Valley | 5,736 | 29.3 | 617 | 3.1 | 13,248 | 67.7 | 19,601 | 2.3 |
| Kyogle | 1,142 | 32.4 | 109 | 3.1 | 2,274 | 64.5 | 3,525 | 2.2 |
| Lismore | 4,754 | 29.4 | 764 | 4.7 | 10,672 | 65.9 | 16,190 | 2.4 |
| Richmond Valley | 2,507 | 29.3 | 258 | 3.0 | 5,784 | 67.7 | 8,549 | 2.4 |
| Tweed | 10,104 | 28.8 | 1,332 | 3.8 | 23,650 | 67.4 | 35,086 | 2.4 |
| Northern NSW | 31,969 | 28.9 | 4,531 | 4.1 | 74,033 | 66.9 | 110,533 | 2.3 |
| NSW | | 23.8 | | 4.2 | | 72.0 | | 2.6 |

Source: ABS Quickstats, 2016 Census: <https://www.abs.gov.au/websitedbs/D3310114.nsf/Home/2016%20QuickStats> (accessed 25 September 2019)

Tenure types

In the Northern NSW district, 40.0% of occupied private dwellings are owned outright, 28.1% were owned with a mortgage and 27.8% were rented.

Kyogle had the highest proportion of private dwellings own outright, at 45.8%. This is much higher than the NSW average of 32.3%. Lismore had the smallest proportion of households owned outright at 35.9%. Again, this is still higher than the NSW state average.

Byron had the highest proportion of rented private dwellings at 30.8%. This was followed closely by Richmond Valley at 29.1%.

Table 23. Tenure of occupied private dwelling in the Northern NSW, by LGA

| LGA | Owned outright | | Owned with mortgage | | Rented | | Other tenure | | Not stated | |
|---------------------|----------------|-------------|---------------------|-------------|---------------|-------------|--------------|------------|--------------|------------|
| | No. | % | No. | % | No. | % | No. | % | No. | % |
| Ballina | 6,644 | 41.0 | 4,293 | 26.5 | 4,547 | 28.0 | 231 | 1.4 | 507 | 3.1 |
| Byron | 4,150 | 36.5 | 3,233 | 28.5 | 3,500 | 30.8 | 102 | 0.9 | 377 | 3.3 |
| Clarence Valley | 8,628 | 44.0 | 5,249 | 26.8 | 4,976 | 25.4 | 121 | 0.6 | 622 | 3.2 |
| Kyogle | 1,618 | 45.8 | 969 | 27.4 | 788 | 22.3 | 39 | 1.1 | 121 | 3.4 |
| Lismore | 5,817 | 35.9 | 5,067 | 31.3 | 4,674 | 28.9 | 149 | 0.9 | 484 | 3.0 |
| Richmond Valley | 3,297 | 38.6 | 2,407 | 28.2 | 2,490 | 29.1 | 70 | 0.8 | 278 | 3.3 |
| Northern NSW | 30,154 | 40.0 | 21,218 | 28.1 | 20,975 | 27.8 | 712 | 0.9 | 2,389 | 3.2 |
| NSW | | 32.2 | | 32.3 | | 31.8 | | 0.9 | | 2.8 |

Source: ABS Quickstats, 2016 Census: <https://www.abs.gov.au/websitedbs/D3310114.nsf/Home/2016%20QuickStats> (accessed 25 September 2019)



Housing affordability

One way to measure housing stress is to calculate the percentage of households who spend more than 30% of their household income on rent or mortgage payments.

Of the six LGAs in the Northern NSW district, Byron has the highest proportion of households in rental stress (17.2%). This is above the state average of 12.9% (see Table 24). Byron also has a higher rate of households spending more than 30% of their income on rent than the state average (8.5% compared to 7.4%).

Kyogle had the smallest proportion of households in rental stress, at 8.8%. Clarence Valley had the smallest proportion of households in mortgage stress, at 5.4%.

Table 24. Mortgage and rent payments in the Northern NSW district, by LGA¹

| | Ballina | Byron | Clarence Valley | Kyogle | Lismore | Richmond Valley | New South Wales |
|--|---------|---------|-----------------|---------|---------|-----------------|-----------------|
| Average weekly rent | \$340 | \$400 | \$255 | \$200 | 4260 | \$250 | \$380 |
| Renting households where rent payments are less than 30% of household income | 87.1% | 82.8% | 88.3% | 91.2% | 86.7 | 87.7 | 87.1% |
| Renting households where rent payments are less than 30% of household income | 12.9% | 17.2% | 11.7% | 8.8% | 13.3 | 12.3 | 12.9% |
| Average monthly mortgage repayments | \$1,733 | \$1,733 | \$1,300 | \$1,100 | 1,430 | \$1,300 | \$1,986 |
| Home-owning households where mortgage repayments are less than 30% of household income | 93.8% | 91.5% | 94.6% | 93.2% | 93.1 | 94.5 | 92.6% |
| Home-owning households with mortgage repayments greater than or equal to 30% of household income | 6.2% | 8.5% | 5.4% | 6.8% | 6.9% | 5.5% | 7.4% |

Source: ABS Quickstats, 2016 Census: <https://www.abs.gov.au/websitedbs/D3310114.nsf/Home/2016%20QuickStats> (accessed 25 September 2019)

¹ The number of households where rent and mortgage payments were 30% or more of an imputed income measure are expressed in this table as a proportion of the total number of households in an area. The nature of the income imputation means that the reported proportion may significantly overstate the true proportion.

Social housing

As of 30 June 2018, there were 4,504 social housing residential dwellings in the Northern NSW district (see Table 25). Public housing accounted for 57.2% of these dwellings and community housing accounted for 27.3%. The majority of these dwellings were in the Tweed LGA.

Table 25. Social Housing Residential Dwellings as at 30 June 2018 in the Northern NSW district

| | Public Housing | | Aboriginal Housing Office | | Community Housing | | Indigenous Community Housing | | Total |
|---------------------|----------------|-------------|---------------------------|------------|-------------------|-------------|------------------------------|-------------|----------------|
| | No. | % | No. | % | No. | % | No. | % | |
| Ballina | 591 | 71.5 | 39 | 4.7 | 135 | 16.3 | 61 | 7.4 | 826 |
| Byron | 6 | 2.0 | 0 | 0.0 | 287 | 94.7 | 10 | 3.3 | 303 |
| Clarence Valley | 323 | 46.7 | 38 | 5.5 | 200 | 28.9 | 131 | 19.0 | 691 |
| Kyogle | 29 | 20.7 | 7 | 5.0 | 0 | 0.0 | 104 | 74.2 | 140 |
| Lismore | 502 | 62.3 | 50 | 6.2 | 210 | 26.1 | 44 | 5.5 | 806 |
| Richmond Valley | 205 | 47.7 | 31 | 7.2 | 119 | 27.7 | 75 | 17.4 | 430 |
| Tweed | 922 | 70.5 | 56 | 4.3 | 280 | 21.4 | 49 | 3.7 | 1,307 |
| Northern NSW | 2,578 | 57.2 | 221 | 4.9 | 1,231 | 27.3 | 474 | 10.5 | 4,504 |
| NSW | 111,341 | 73.4 | 4,603 | 3.0 | 30,757 | 20.3 | 4,971 | 5.3 | 151,672 |

Source: FACS Administrative Data, unpublished.

As of 30 June 2018, there were 2,699 public housing and Aboriginal housing tenancies in the Northern NSW district (see Table 26). Public housing made up 92% of all tenancies and Aboriginal housing made up 8% of all tenancies.

Table 26. Public Housing and Aboriginal Housing Office Tenancies, as at 30 June 2018 in the Northern NSW district

| | Public Housing | | Aboriginal Housing Office | | Total |
|---------------------|----------------|-------------|---------------------------|------------|----------------|
| | No. | % | No. | % | |
| Ballina | 568 | 93.7 | 38 | 6.3 | 606 |
| Byron | 1 | 100 | 0 | 0 | 1 |
| Clarence Valley | 315 | 89.5 | 37 | 10.5 | 352 |
| Kyogle | 29 | 80.6 | 7 | 19.4 | 36 |
| Lismore | 464 | 90.4 | 49 | 9.6 | 513 |
| Richmond Valley | 200 | 86.6 | 31 | 13.4 | 231 |
| Tweed | 905 | 94.3 | 55 | 5.7 | 920 |
| Northern NSW | 2,482 | 93.3 | 217 | 8.2 | 2,659 |
| NSW | 106,895 | 96.0 | 4,414 | 4.0 | 111,309 |

Source: FACS Administrative Data, unpublished.

As of 30 June 2018, there were 1,805 vacant social housing residential dwellings in the Northern NSW district (see Table 25 and 26).