



# Aboriginal-led data sharing Child Protection and Out-of- home Care Dashboard

Hendra Santoso  
Senior Analyst  
Child Protection Reporting  
Organisational Performance

Family and Community Services  
Insights, Analysis and Research  
(FACSIAR)

Communities and Justice

June 2024

# Acknowledgement to country



I would like to acknowledge the traditional custodians of the land. For me that is the Bidjigal people of the Eora Nation

I pay my respects to their Elders past and present.

I extend that respect to the Aboriginal and Torres Strait Islander people and colleagues here today.



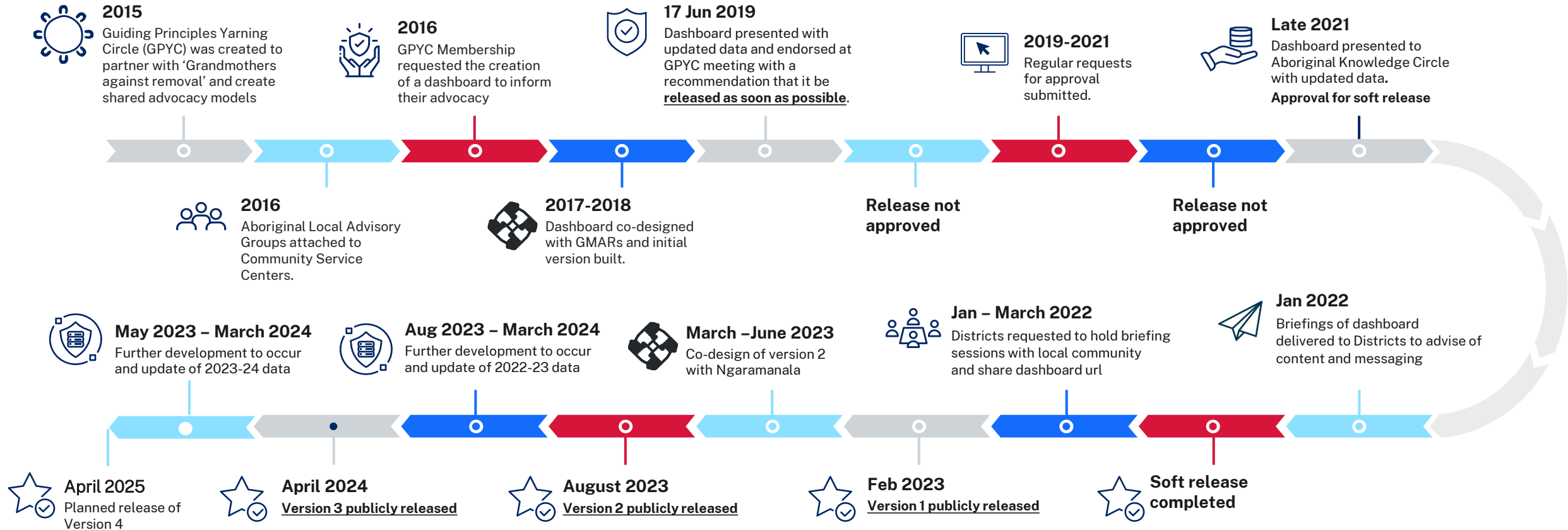
# Contents

---

1	Development timeline of the Aboriginal-led data sharing Child Protection and Out-of-home Care Dashboard	4
2	Evolution of the dashboard	5 - 7
3	What are the measures?	8
4	Next steps	9
5	Web demonstration	10
6	Questions?	11

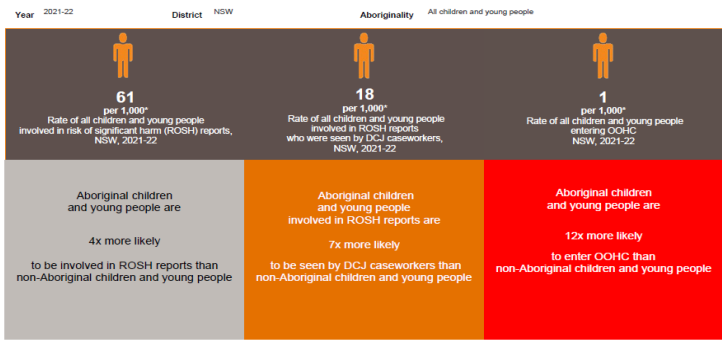
---

# 1 Development timeline of the Aboriginal-led data sharing Child Protection and Out-of-home Care Dashboard

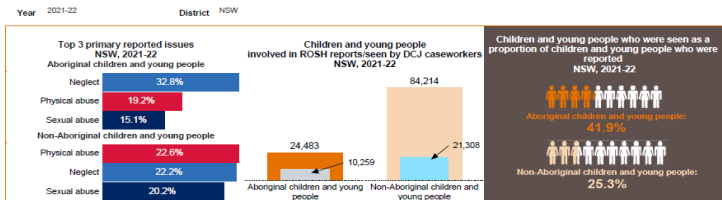




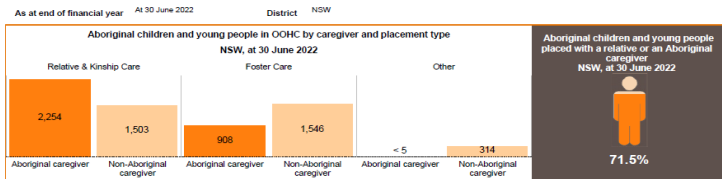
Population rates of children and young people in the NSW child protection system



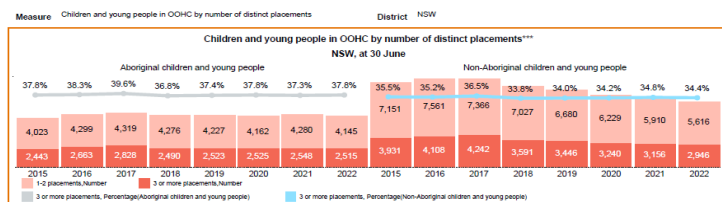
Keeping Aboriginal children and young people safe from harm



Respectful partnerships with Aboriginal families and kin



Supporting the safety and wellbeing of Aboriginal children and young people while in care



**Note:**

- Data Source—Child protection data:
  - After 2015-16, ChildStory Corporate Information Warehouse (CIW)
  - From 2017-18, NSCC Corporate Information Warehouse (CIW)
- Data considerations:
  - Data are suppressed for totals or a subset of totals that contain 4 or fewer records due to small numbers and to protect privacy.
  - Children and young people seen by ACJC caseworkers measure is a new performance measure which was introduced during the period 2018-19. This measure is not directly comparable to the previous measure which was reported in the Corporate Information Warehouse (CIW) from 2015-16 to 2017-18.
  - Due to the introduction of ChildStory, the Out-of-Home Care (OOHC) counting rules have been changed for 2015-16. Data as at 30 June 2015 and onwards is not directly comparable to historic data for the following performance measures:
    - Children and young people in OOH
    - Children and young people entering OOH
    - Children and young people entering OOH for the first time
    - Children and young people in statutory OOH

\*\*\* The total number of children in OOH by number of distinct placements for NSW at 30 June each year excludes children where placement information was not available. For example at 30 June 2021.

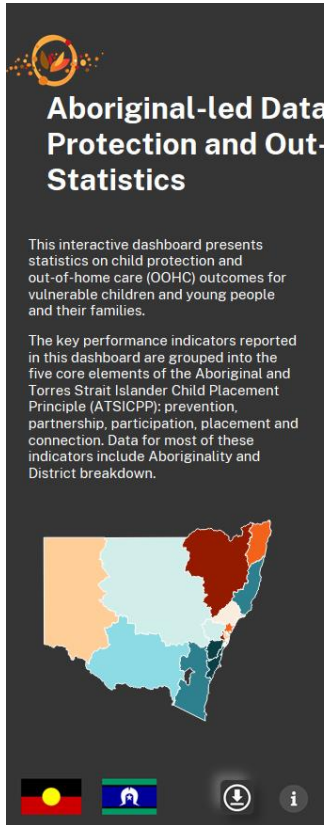
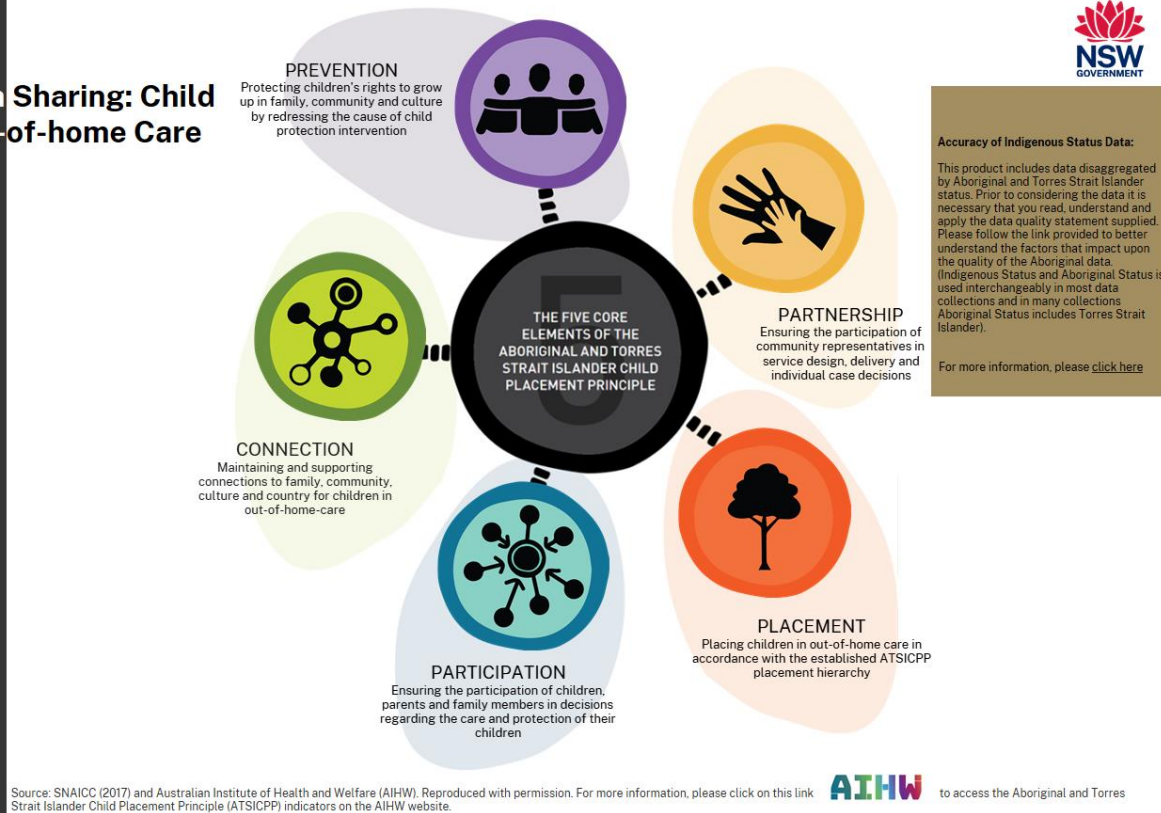
## 2 Evolution of the dashboard

The first version of the dashboard was a one page view that presented all these measures by DCJ district and Aboriginality, publicly released on DCJ website in February 2023.

The measures were grouped by the DCJ departmental framework across 4 themes:

1. Population rates of children and young people in the NSW child protection system
2. Keeping Aboriginal children and young people safe from harm
3. Respectful partnerships with Aboriginal families and kin
4. Supporting the safety and wellbeing of Aboriginal children and young people while in care.

## 2 Evolution of the dashboard *cont..*

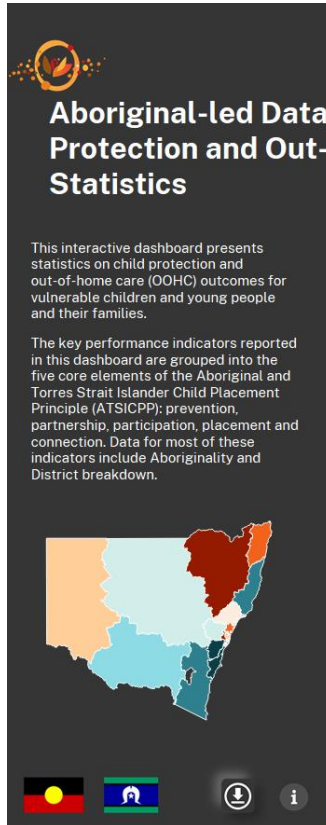



The **second version** of the dashboard had similar information but was re-designed to present this information from an Aboriginal perspective using the the Aboriginal and Torres Strait Islander Child Placement Principles (ATSICPP), from the Secretariat of National Aboriginal and Islander Child Care (SNAICC).

The key performance indicators in the new design are grouped by the fire core elements of ATSICPP: Prevention, Partnership, Placement, Participation and Connection.

This is a framework designed to promote policy and practice that will reduce the over-representation of Aboriginal and Torres Strait Islander children in the child protection system.

## 2 Evolution of the dashboard *cont..*

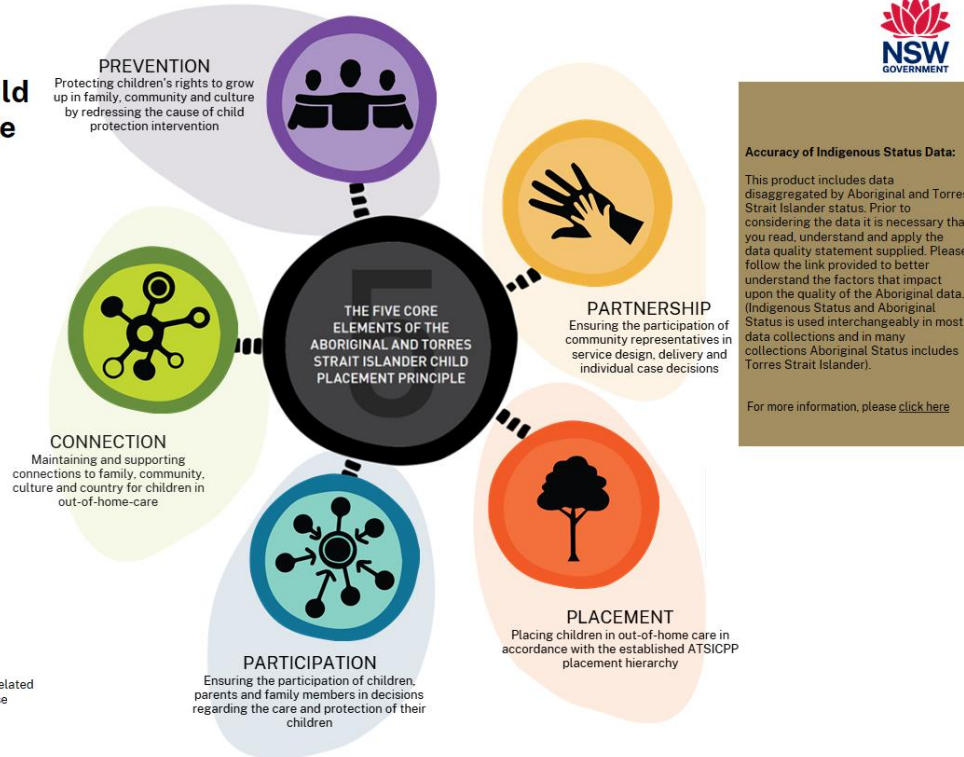


**Aboriginal-led Data Sharing: Child Protection and Out-of-home Care Statistics**

This interactive dashboard presents statistics on child protection and out-of-home care (OOHC) outcomes for vulnerable children and young people and their families.

The key performance indicators reported in this dashboard are grouped into the five core elements of the Aboriginal and Torres Strait Islander Child Placement Principle (ATSICPP): prevention, partnership, participation, placement and connection. Data for most of these indicators include Aboriginality and District breakdown.

### Sharing: Child Protection and Out-of-home Care Statistics



**Accuracy of Indigenous Status Data:**

This product includes data disaggregated by Aboriginal and Torres Strait Islander status. Prior to considering the data it is necessary that you read, understand and apply the data quality statement supplied. Please follow the link provided to better understand the factors that impact upon the quality of the Aboriginal data. (Indigenous Status and Aboriginal Status is used interchangeably in most data collections and in many collections Aboriginal Status includes Torres Strait Islander).

For more information, please [click here](#)

To access other Aboriginal related data published by DCJ, please click on the link above.

Source: SNAICC (2017) and Australian Institute of Health and Welfare (AIHW). Reproduced with permission. For more information, please click on this link  to access the Aboriginal and Torres Strait Islander Child Placement Principle (ATSICPP) indicators on the AIHW website.

The third version of the dashboard is the current dashboard publicly released on the DCJ website ([link](#)) which includes 4 additional measures. FACSIAR are committed to improving the current dashboard and consulting with key Aboriginal stakeholders to address reporting gaps.

For example, in version 2 we explicitly acknowledged a gap in the Partnership element and in version 3 have added in information about funding to Aboriginal Community Controlled Organisations.

## 3 What are the measures?

### First version

1. Population rates for children and young people (CYP) at ROSH, entering out-of-home care (OOHC) and children seen
2. Top 3 primary reported issues
3. Number and proportion of CYP at ROSH and children seen
4. Number of CYP in OOHC by placement type
5. Number of Aboriginal CYP placed with a relative or an Aboriginal caregiver
6. Number of CYP in OOHC by distinct placements
7. Number of CYP in statutory OOHC placed with NGOs
8. Number of CYP in statutory OOHC by case management responsibility
9. Number of CYP entering OOHC (and first time ever)

### Second version

Measures in first version dashboard, plus:

- Population rates for CYP in OOHC
- CYP on Guardianship Order at 30 June;
- CYP who exited OOHC, to restoration; and to Guardianship Order during the year and proportion of these children when compared to CYP in OOHC at 30 June previous year; and
- Number and percentage of children and young people with documented case plan, cultural support plan and leaving care plan.

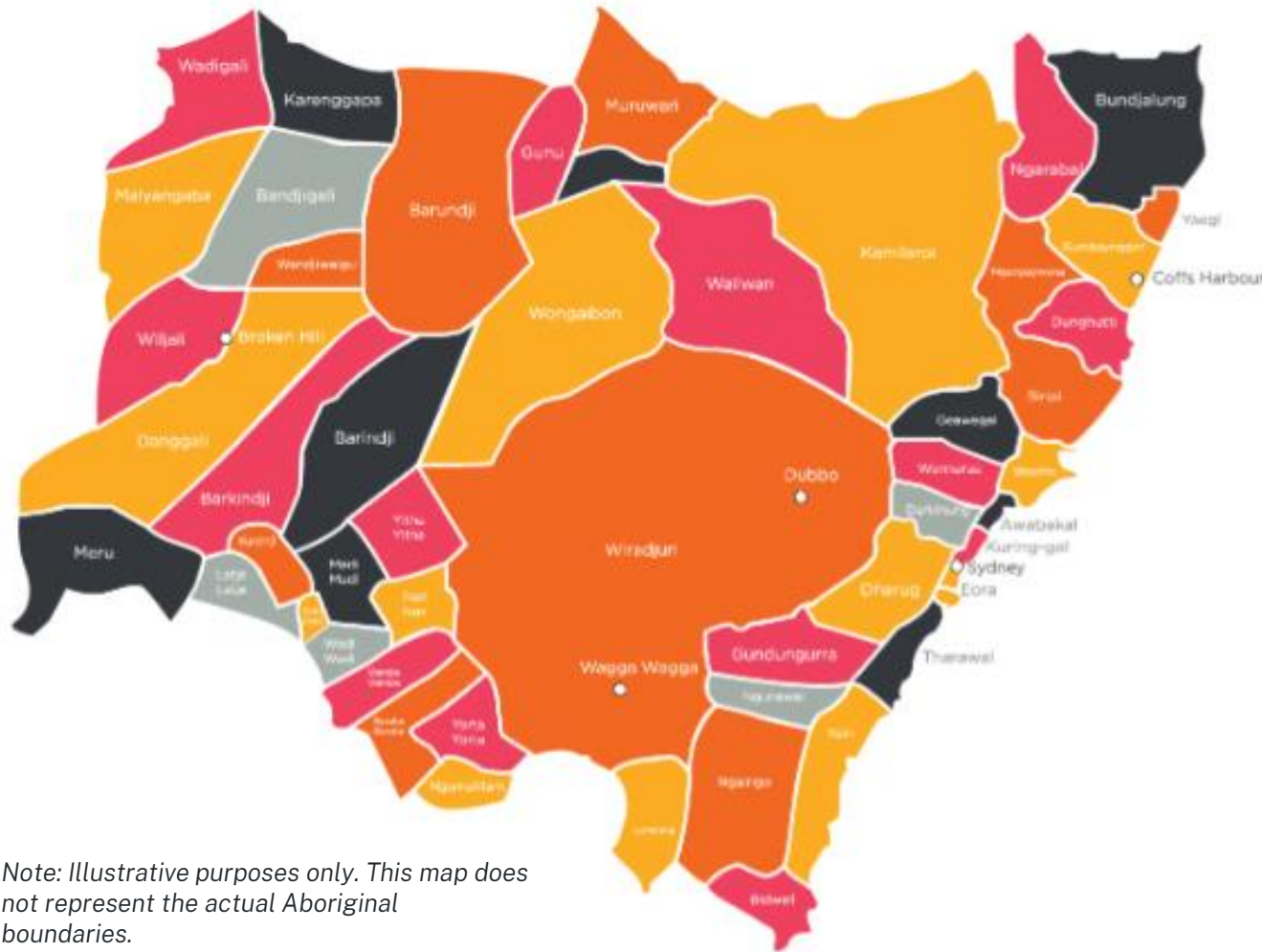
### Third version

Measures in second version dashboard, plus:

- Funding commitments to Aboriginal Community Controlled Organisations (ACCOs);
- CYP in OOHC by length of time in care;
- Number and percentage of CYP with documented case plan, cultural support plan and leaving care plan by case management responsibility; and
- A measure of permanency stability - i.e. children and young people who were restored and did not return to OOHC within 12 months



# 4 Next steps



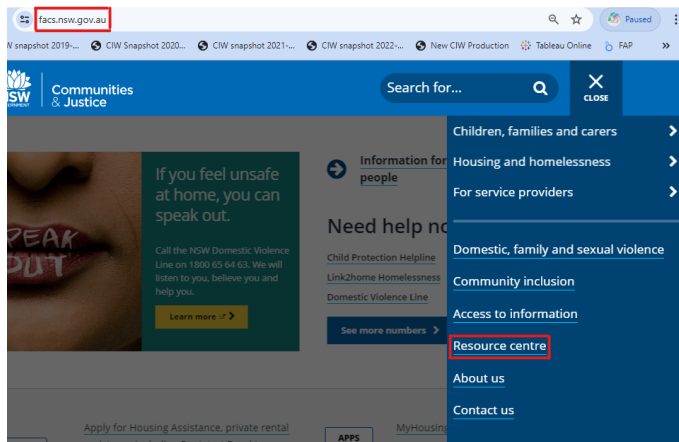
*Note: Illustrative purposes only. This map does not represent the actual Aboriginal boundaries.*

## FACSIAR will:

- Present the data in the dashboard by Aboriginal boundaries in NSW to complement the DCJ District boundaries.
- Plan to meet with representatives from Aboriginal Land Council this year to discuss these requirements.
- Review existing measures to:
  - Address data gaps
  - Identify new measures
  - Retire new measures that are no longer appropriate

# 5 Web demonstration

## Steps to navigate to the Aboriginal-led data sharing dashboard on the DCJ website



### Resource centre

Statistics and listings of factsheets, forms, policies, publications, and research reports and also videos

<p><b>Factsheets</b></p> <p>Browse Factsheets by topic including housing, parenting, adoption, Out of Home Care, child protection, domestic and disability</p>	<p><b>Forms</b></p> <p>Browse forms by topic including housing, adoption, Out of Home Care, child protection, domestic and family violence</p>	<p><b>Policies</b></p> <p>Browse policies by topic including housing, adoption, Out of Home Care, child protection, domestic and family violence</p>
<p><b>Annual reports, budgets and other publications</b></p> <p>DCJ publications, including annual reports, budget briefings, plans, strategies and frameworks and all other publications related to DCJ services</p>	<p><b>Statistics</b></p> <p>Key data tracking how DCJ is improving outcomes for clients. Includes interactive dashboards, accessible downloadable data and accessible high level summaries.</p>	<p><b>Family and Community Services Insights, Analysis and Research (FACSIAR)</b></p> <p>Includes research seminars, analysis and research publications, research studies and research presentations</p>

### Statistics

Key DCJ performance data - shows the services we provide, clients we serve and outcomes we deliver. We are committed to user-friendliness, transparency, accountability and open data sharing.

<p><b>User guide</b></p> <p>Learn how to navigate the interactive dashboards, use data filters to create and download customised displays and get a better understanding of statistics</p>	<p><b>Accessible data tables and high level summaries</b></p> <p>For a full listing of data, download data tables in accessible Excel format. High level summaries of key results are available in Word or PDF format</p>	<p><b>Glossary</b></p> <p>The glossary explains key terms, services, programs and policies included in our reports</p>
<p><b>Statistical Report 2022-23</b></p> <p>See our performance results for 2022-23 showing how we have supported people in NSW to improve their outcomes.</p>	<p><b>Statistical Report 2021-22</b></p> <p>See our performance results for 2021-22 showing how we have supported people in NSW to improve their outcomes.</p>	<p><b>Statistical Report 2020-21</b></p> <p>See our performance results for 2020-21 showing how we have supported people in NSW to improve their outcomes.</p>
<p><b>Statistical Report 2019-20</b></p> <p>See our performance results for 2019-20 showing how we have supported people in NSW to improve their outcomes.</p>	<p><b>Statistical Report 2017-18</b></p> <p>Outcomes for: Aboriginal people, children and young people, people with disability, social housing, community participation and domestic and family violence</p>	<p><b>Aboriginal-led Data Sharing: Child Protection and Out-of-home Care Statistics</b></p> <p>Annual report – the latest is 2022-23. The report contains child protection and OOH related outcomes for Aboriginal children and young people from 2014-15.</p>

Explore the dashboard: [Aboriginal-led Data Sharing: Child Protection and Out-of-home Care Statistics](#)



# 6 Questions?

