

Your consent to an interview

Written consent will be sought from your caregiver before the interview. You will be shown the Study video before you agree to an interview. Remember, your answers to the questions will remain confidential. Young people can withdraw consent and discontinue at any time.

How was the child or young person selected for this Study?

Children and young people aged 0–17 years who entered care for the first time between May 2010 and October 2011, and their caregivers, are eligible to participate in this study. Children and young people were selected for this study from the DCJ administrative database.

How will I be informed about the Study findings?

Research reports on the Study findings about factors influencing the outcomes of children and young people are published on the study webpage www.facs.nsw.gov.au/resources/research/pathways-of-care/pocls-publication/pocls-research-and-statistics-reports.

Newsletters about the study's findings are sent to those who have joined in. These are available on the webpage www.facs.nsw.gov.au/resources/research/pathways-of-care/pocls-publication/newsletters-pocls

In any publication, information is presented in such a way that participants are not able to be identified.

Other sources of Study information

To get a good understanding of how the service system is working we will collect information about the children's development and wellbeing from a number of sources including existing information held by education, health and human services agencies, and link it to the information collected for this study.

Who is conducting the Study?

The NSW Department of Communities and Justice (DCJ) is conducting the study with the assistance of a consortium of researchers from the University of Sydney, University of NSW, University of South Australia, Kurungkurl Katitjin - Edith Cowan University, University of Wollongong, Sax Institute, University of Canterbury - New Zealand, Chapin Hall Centre for Children University of Chicago. The interviews are being conducted by Ipsos/I-view www.ipsos.com.au who are social research data collection experts. These researchers have experience conducting similar studies.

Ethics

The study has been approved by the UNSW Human Research Ethics Committee (no. HC 210985) and the Aboriginal Health and Medical Research Council of NSW Ethics Committee (no. 2016/22). For more information about ethics approvals please see the study webpage.

Where can I get support?

CREATE Foundation for children and young people in care. Phone **1800 655 105** (free call).

Aboriginal Statewide Foster Care Support Service. Phone **1800 888 698** (free call).

Kids Helpline counselling service. Phone **1800 55 1800** (free call).

Where do find more information?

Phone **1800 997 960** (free call) for researchers at DCJ who are managing the study.

Phone **1800 105 088** (free call) for Ipsos/I-view who are conducting the interviews.

Please also visit our study webpage for more information: www.facs.nsw.gov.au/resources/research/pathways-of-care



Information for Young People

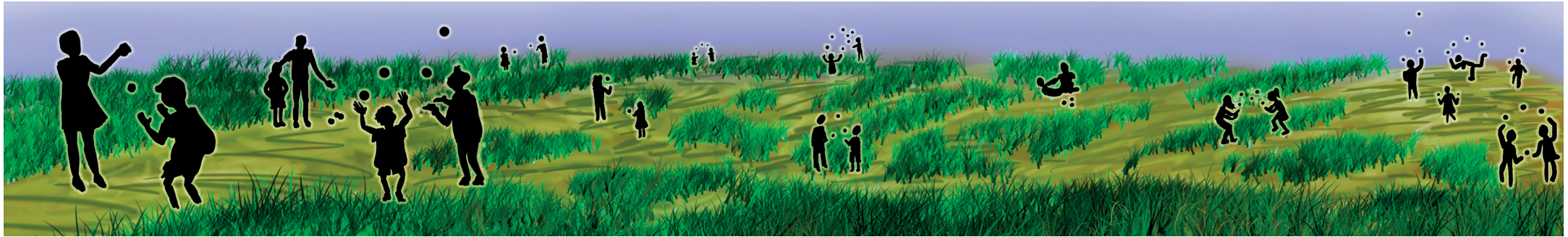
Pathways of Care Longitudinal Study

A research study about improving the lives of children & young people

The artwork was created by a young person who grew up in care.

"The banner (inside pages) show many pathways through the care system with a carer or caseworker acting as a guide, ultimately leading to independence of every young person. Whether we live with family or strangers, study, work or just try our best, the paths we choose and are guided through in our youth are what we use to prepare ourselves for the happiest adulthood we can achieve." Billy Black





Would you like to be in this Study?

You are invited to be part of this important research study on how to improve the lives of children and young people who have been in out-of-home care. To find out more about the Pathways of Care longitudinal Study please watch the study video www.facs.nsw.gov.au/resources/research/pathways-of-care/videos

Good quality research studies like the Pathways of Care Longitudinal Study give us invaluable insights into what is happening for children, young people and families so we can improve services in NSW.

What is this study all about?

This study is gathering the voices and experiences of children, young people, parents, carers, teachers and caseworkers.

We want to learn more about children and young people's experiences and views about being in care and their wellbeing. This will inform improvements in policy, service delivery and programs to better support children, young people, caregivers, families and communities.

About 1,500 children and young people living with foster carers, relatives, kin, adoptive parents and some who have been restored to their parents, have joined in this study.

The findings are used to improve the services and support offered to children and young people and those caring for them.

What are the Study timelines?

We would like to invite you to be part of the 6th round of interviews being conducted in 2023. The last round of interviews were conducted about two years ago.

Some young people have joined in every interview, and others have joined in when it suited them. It is important to see how young people are growing up overtime which is why we are inviting you to participate in the next round.

An Ipsos/I-view interviewer will contact you to organise a time and place to conduct the interview.

Do I have to participate?

Participation in this study is voluntary and you can withdraw at any time. If you agree to participate you do not have to answer all the questions. Your decision about whether or not to participate will not affect your relationship with the NSW Department of Communities and Justice (DCJ).

How will my privacy be protected?

The interviews are being conducted by an independent research agency called Ipsos/I-view. For more information visit www.ipsos.com.au.

Information collected by Ipsos/I-view is kept strictly confidential. The answers are kept securely in a database without names, phone numbers and addresses so no-one knows who said what.

What does participation in the Study involve?

If you are 12-17 years old you will be invited to complete a language activity and answer some questions on an iPad which could take about 45 minutes.

You will receive a \$30 gift voucher to thank you for your time in participating in this important research study.

The interview will focus on your health, school, friends, wellbeing and experiences. You will also be asked about the services and support you receive or would like.

During the interview, your answers will be recorded on the interviewer's iPad. You can answer the questions on the iPad by yourself or with the interviewer.

All the information gathered from people in this study will remain confidential except as required by law (e.g. if the child's safety, welfare or wellbeing is of concern). Only authorised research staff will have access to the data. It will not be possible to identify anyone from the data.

How are caregivers or parents involved?

The interview with carers and parents you are living with is expected to take up to 2 hours. The questions focus on their child's health, education, behaviour and wellbeing. We also ask your carers and parents about their experiences and what can be improved.